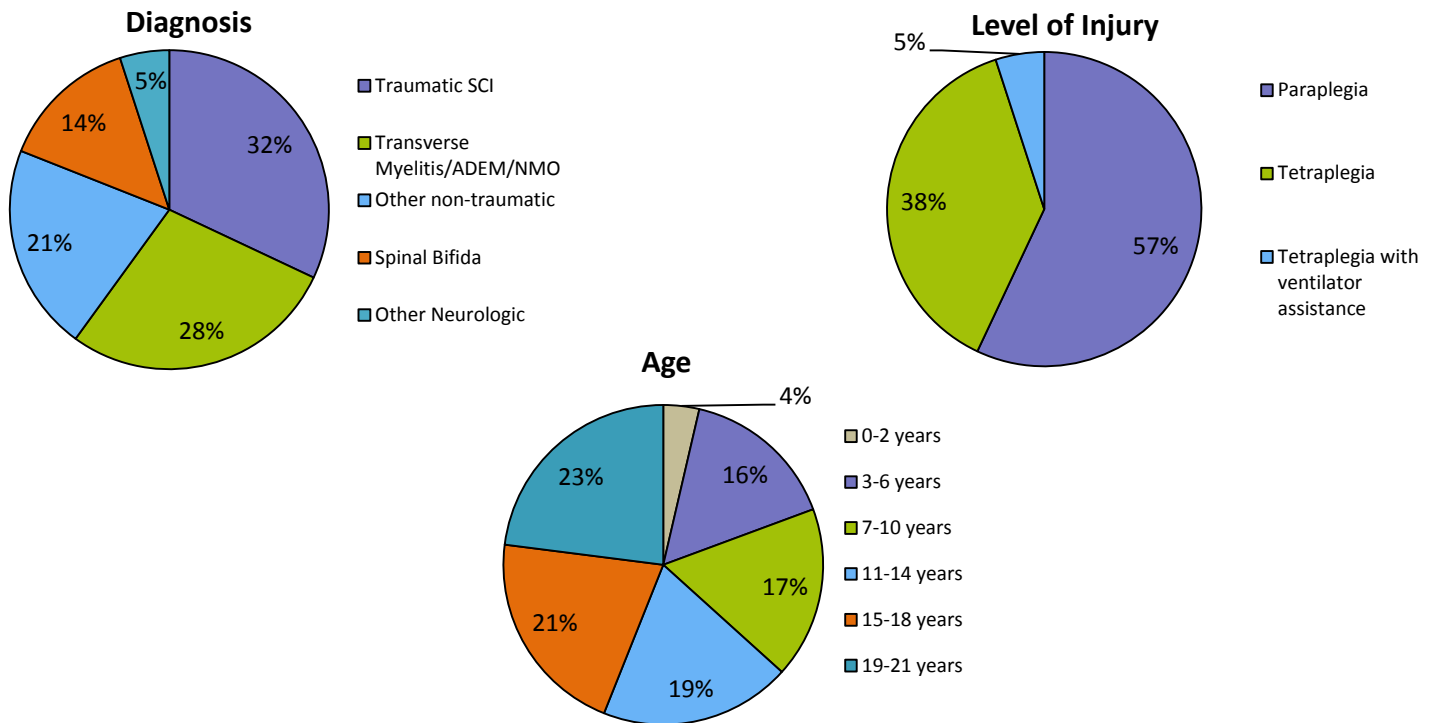


The Pediatric and Adolescent Outpatient Spinal Cord Injury Program at Kennedy Krieger Institute

Who We Serve

The International Center for Spinal Cord Injury (ICSCI) at Kennedy Krieger Institute serves patients with spinal cord injuries or paralysis, which can have a variety of causes. The graphs below show the distribution of our pediatric and adolescent patients by cause of injury, by level of injury, and age range during fiscal years 2015-2016 (July 2014-June 2016). We treated 179 pediatric and adolescent patients in FY2015 and 183 in FY2016 for a total of 248 distinct patients over that two year period.



Activity-Based Rehabilitation Outcomes

Discharge and Community Re-integration Goals

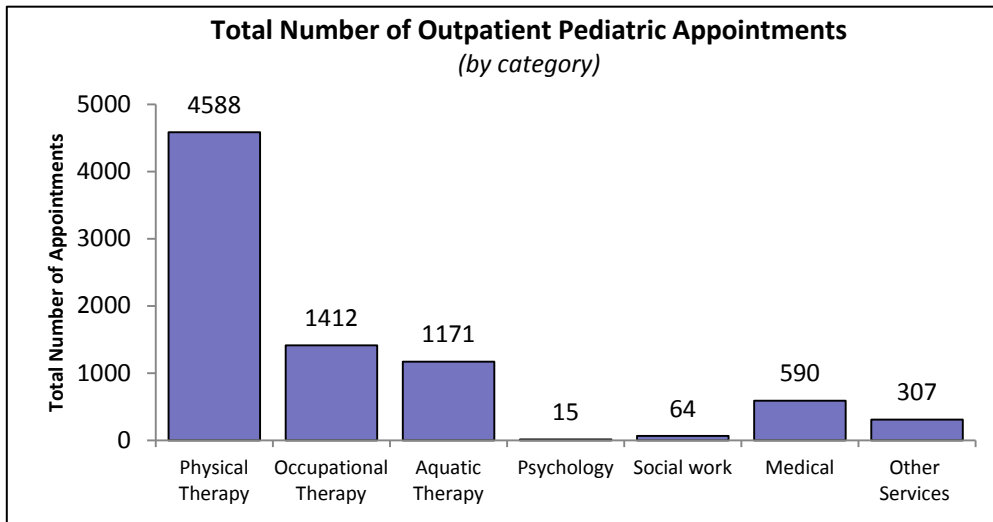
- 88% of patients achieved their therapy goals by discharge
- 100% of patients received a comprehensive home rehabilitation program and were able to document prior to discharge their (and if applicable, their family's) ability to carry out this program
- 100% of patients were discharged to and remain living in the community
- 97% of patients are participating in a private/public/home-school classroom
- 93% of patients did not have an unplanned discharge or unplanned hospitalization (this includes post-discharge)
- 81% of patients who graduate high school successfully transitioned to college or employment

Satisfaction Survey Results**

- 100% of those surveyed rate the therapy services as excellent or good
- 98% of those surveyed agreed that their therapy plan addressed their goals
- 100% of those surveyed rated their overall experience at Kennedy Krieger as excellent or good
- 100% of those surveyed would recommend ICSCI to other patients with paralysis

**These include adult and pediatric satisfaction surveys. Due to the anonymous nature of our surveys we cannot separate the results accurately; instead we report all satisfaction data as a group.

The members of our interdisciplinary team have extensive experience developing and tailoring treatment plans with the unique physical, developmental, educational, and social needs of children in mind.



Functional Improvement

Functional improvement is measured by the Spinal Cord Independence Measure III (SCIM-III). This measure includes three separate subscales, self-care, respiratory and sphincter control and mobility. The higher the SCIM-III score, the more a person can do for themselves. The following chart shows that on average, patient treated in our outpatient activity-based restorative therapy program make statistically significant improvement in their total SCIM score, as well as on each of the three subscales.

