

KENNEDY KRIEGER INSTITUTE: PEDIATRIC OUTPATIENT SPINAL CORD INJURY PROGRAM OUTCOME DATA

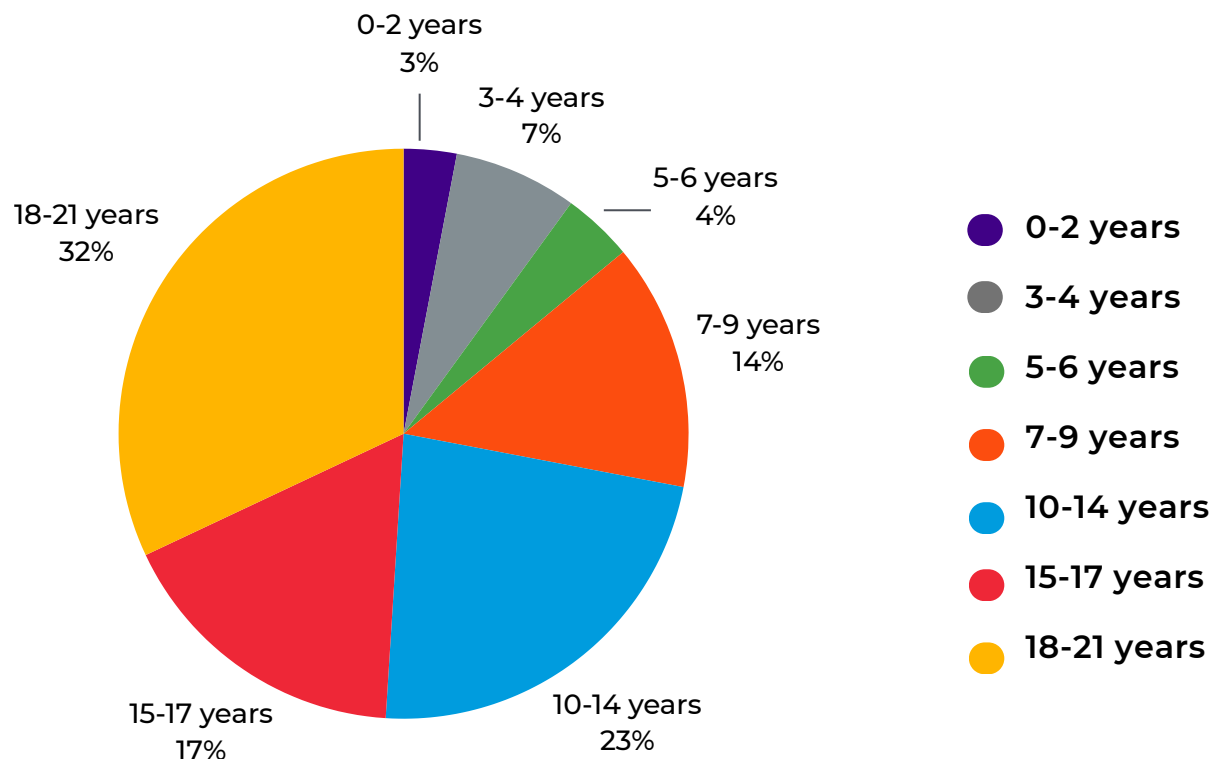


FY 25

Who is treated in the Spinal Cord Injury Program at Kennedy Krieger?

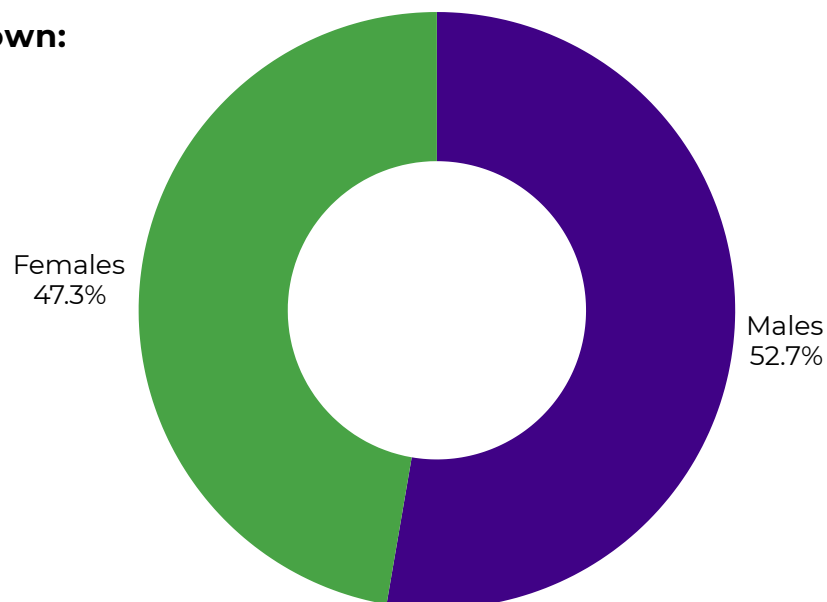
During fiscal year 2025*, 167 children and adolescents with spinal cord injury/dysfunction were treated in the Outpatient Spinal Cord Injury Program.

Below is the age breakdown of those patients:



Gender breakdown:

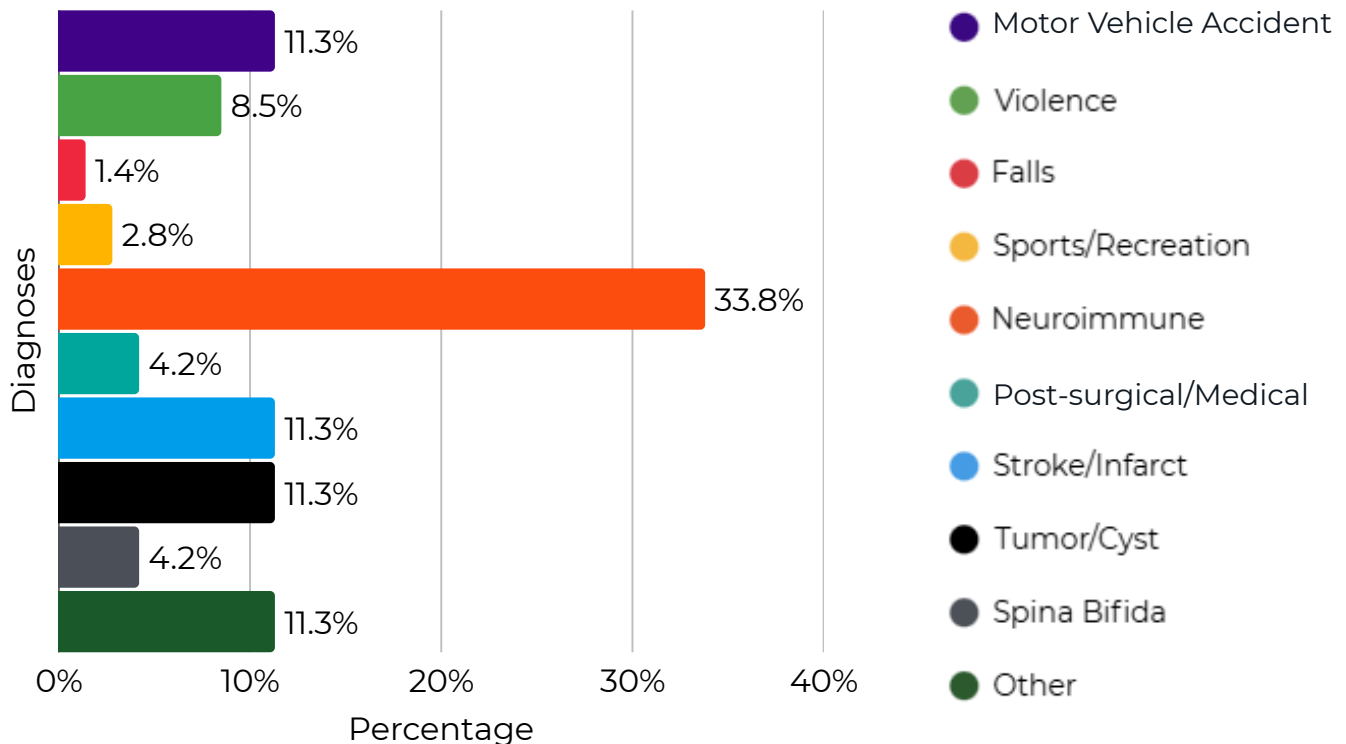
- Female
- Male
- Other



Diagnoses Treated

The Spinal Cord Injury Program treats children and adolescents who have experienced a variety of causes of their spinal cord dysfunction, both traumatic and non-traumatic.

Below is a breakdown of the most common diagnoses treated:



Types of Patients Treated

The patients who come to the Spinal Cord Injury program have functional challenges related to their spinal cord injury.

These challenges may include:



BREATHING



**BOWEL AND BLADDER
DYSFUNCTION**



**ENGAGING IN
ACTIVITIES OF
DAILY LIVING**
(Doing chores, eating)



MOBILITY



**PERFORMING
DAILY SELF-CARE
ACTIVITIES**



**PARTICIPATING
IN HOME,
SCHOOL AND
COMMUNITY
ACTIVITIES**

Patients who are treated by the Spinal Cord Injury Program must be medically stable and able to participate in at least two hours of therapy per day.

Patients with tracheostomies and those requiring mechanical ventilation or diaphragm pacing systems are welcome.

Interdisciplinary Treatment Team

This outpatient team may include:

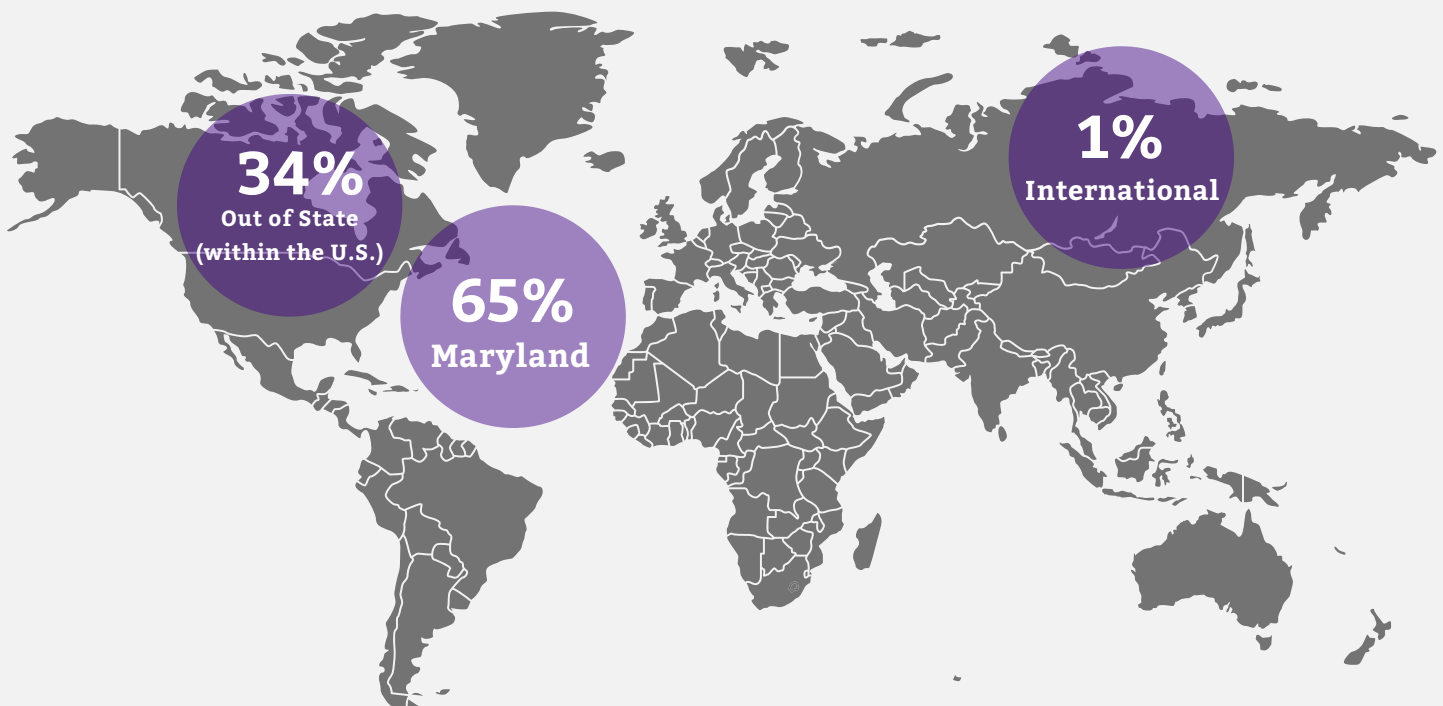
- Adaptive aquatic specialists/Lifeguards
- Assistive technology professionals
- Child life specialists
- Nurse care managers
- Nurse practitioners/Registered nurses
- Occupational therapists/Certified occupational therapy assistants
- Orthotists
- Personal trainers and wellness specialists
- Physical therapists/Physical therapy assistants
- Physiatrists
- Psychologists
- Rehab aides/Rehab techs
- Seating and mobility specialists
- Social workers
- Wound healing specialists

When appropriate, the providers will refer patients to additional services at Kennedy Krieger Institute, Johns Hopkins Hospital or other hospitals with expertise in the care of individuals with spinal cord injuries.



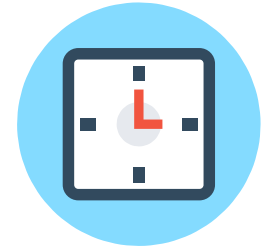
Where do patients live who are seen by the Pediatric Outpatient Spinal Cord Injury Program?

In fiscal year 2025, patients came from the following areas:



How much therapy do patients receive while being treated in the Spinal Cord Injury Program?

In the medically supervised outpatient therapy program, therapists work one-on-one with patients, focusing on achievement of goals set by the patient, physician, therapist and caregiver/family. Patients who are treated by the Spinal Cord Injury Program must be medically stable and able to participate in therapy.



The Spinal Cord Injury Program offers two unique therapy options:

Short-term intensive therapy:

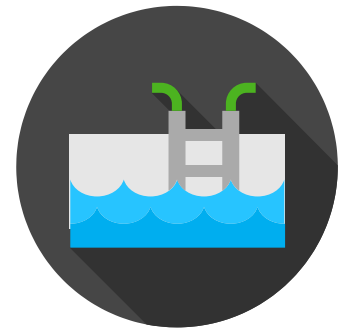
In this **five-day-a-week** program, patients typically attend therapy **one to three weeks for two to five hours of therapy per day**—depending on medical recommendations.

Extended intensive therapy:

In this program, patients typically attend therapy **one to three times per week for six to 12 weeks** and receive **one to four hours of therapy per day**—depending on medical recommendations.

In addition, specialized **Aquatic Therapy is available** with either therapy option.

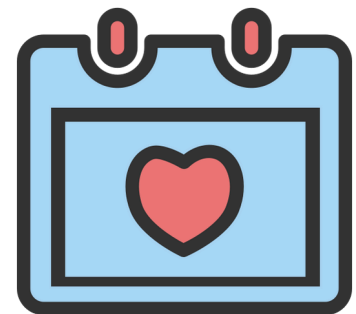
This specialized therapy **features innovative pools** with multiple jets, built-in treadmills, video systems, and floors that operate on lifts to allow barrier-free entry and exit for patients in wheelchairs.



What happens if a patient gets acutely sick or has a medical emergency while an outpatient at Kennedy Krieger?

Due to our proximity to and affiliation with The Johns Hopkins Hospital and other community hospitals, we are comfortable treating patients with intensive, but stable medical needs, such as those requiring a ventilator for breathing.

Occasionally, these more intensive medical needs require unplanned transfers to acute care. **No pediatric patients had medical emergencies requiring transfer to Johns Hopkins or other area hospitals in FY25.**



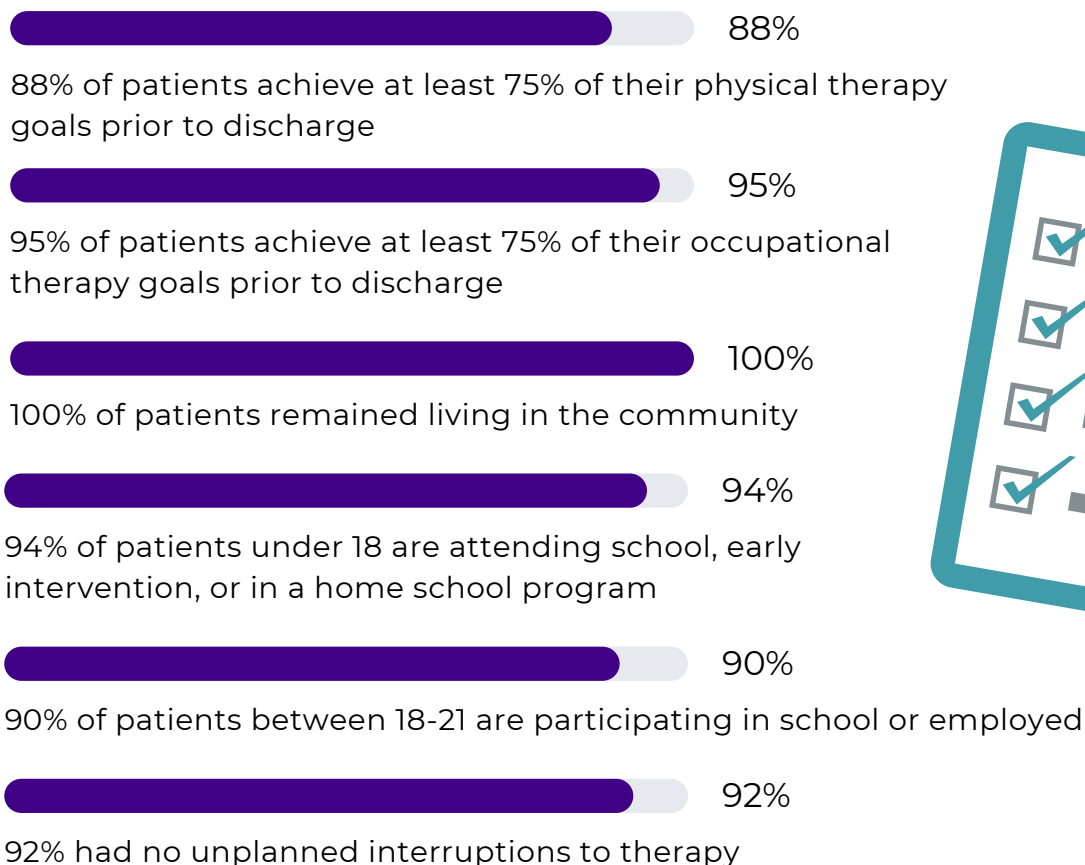
How is a patient and their family involved in the care they receive from the Spinal Cord Injury Program?

Kennedy Krieger is committed to providing person and family-centered care which is a collaborative approach to the planning and delivery of services. Our services reflect the person and family-centered care principles of participation; collaboration; information sharing; dignity and respect; and are aligned fully with the mission, vision and values of the Institute.



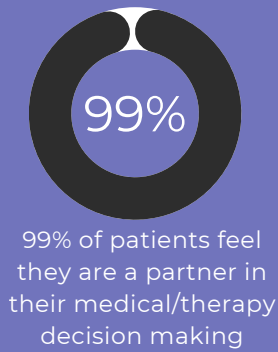
Individuals served and their family members are encouraged to participate in treatment planning, goal setting, family meetings, and education and training sessions.

What kinds of improvements might patients receiving treatment from the Spinal Cord Injury Program be expected to make?**



**Based on a random representative sample of chart reviews

What do patients and their families say about their experience at Kennedy Krieger Institute?



Does Kennedy Krieger have special accreditation?

Kennedy Krieger Institute is accredited by the Commission on the Accreditation of Rehabilitation Facilities (CARF) and The Joint Commission.

Every three years, both organizations review the Institute to ensure all its programs meet or exceed the very high standards it sets for the care of its patients.



****FY 25 represents the dates from July 1, 2024 to June 30, 2025.***