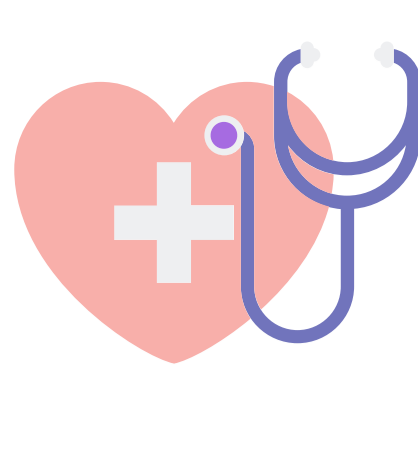


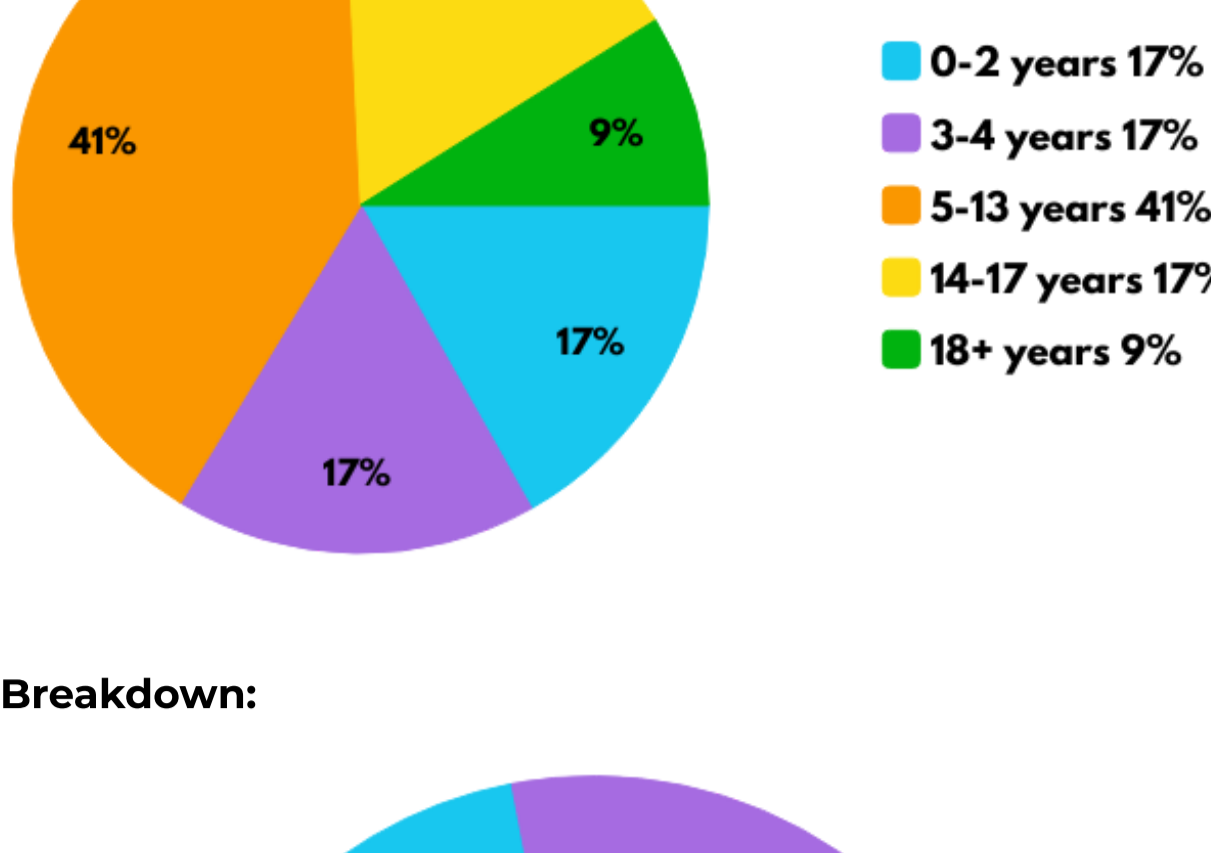
KENNEDY KRIEGER INSTITUTE: SPECIALIZED TRANSITION PROGRAM (STP) OUTCOME DATA FY 22



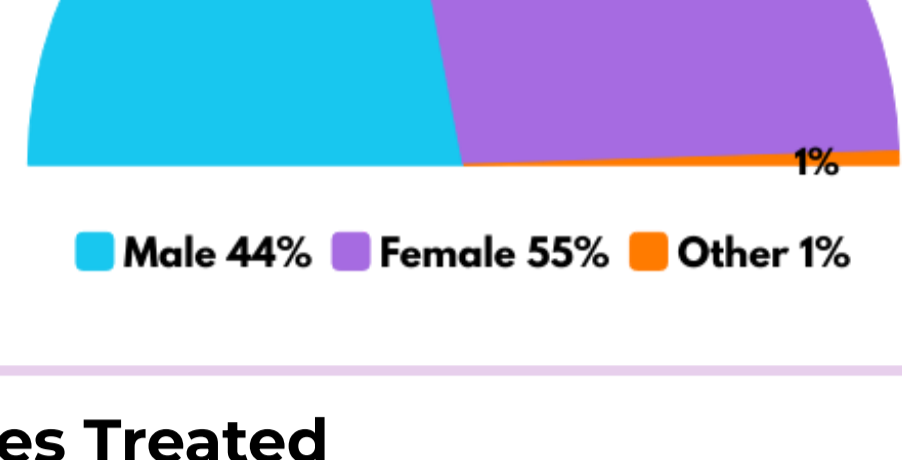
Who is treated in the Specialized Transition Program (STP) at Kennedy Krieger?

During fiscal year 2022*, 102 patients were treated by the Specialized Transition Program at Kennedy Krieger.

Age breakdown of patients:



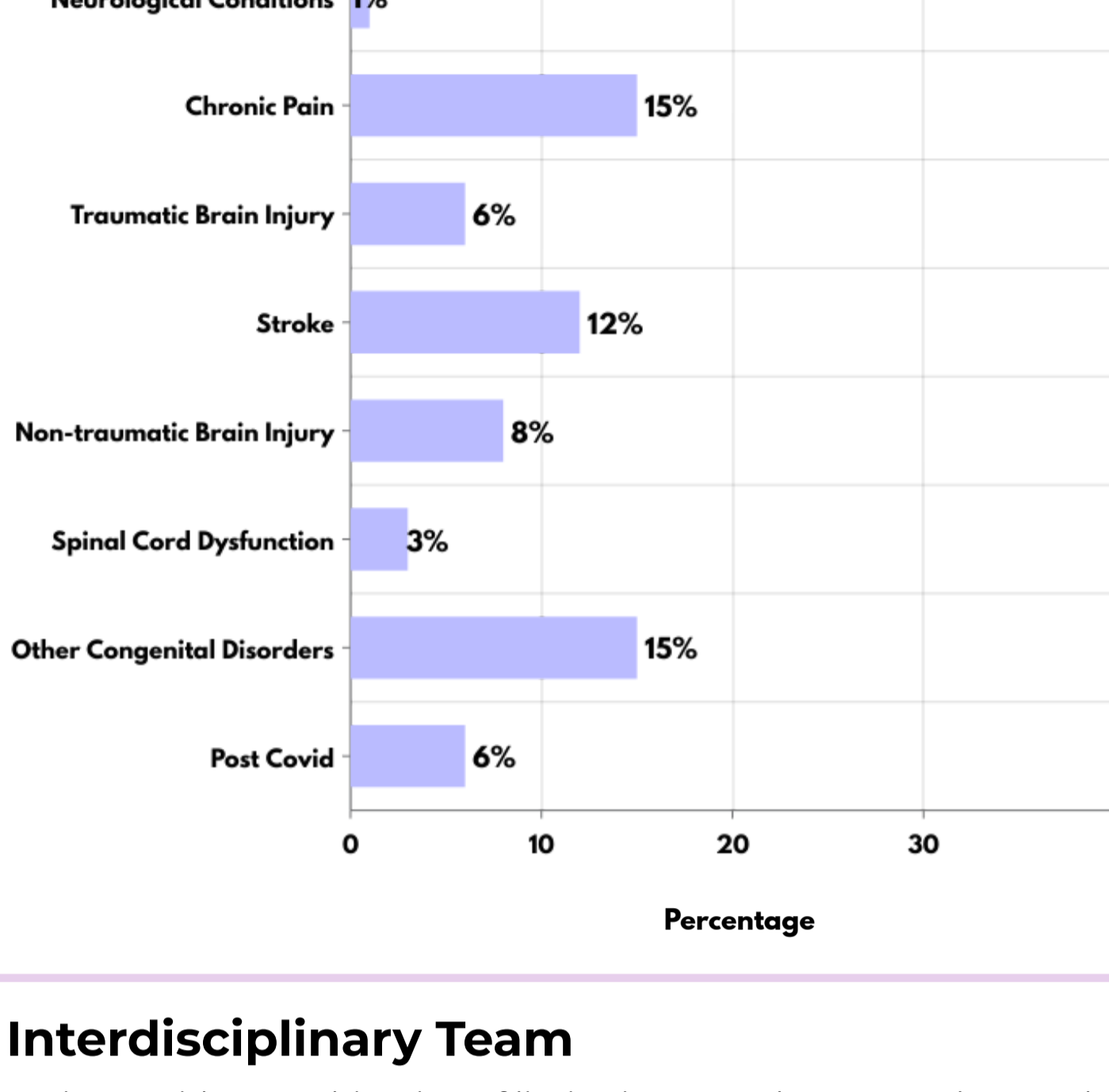
Gender Breakdown:



Diagnoses Treated

The Specialized Transition Program treats children and adolescents who, collectively, have variety of diagnoses.

Below is a breakdown of the most common diagnoses treated by the program:



Interdisciplinary Team

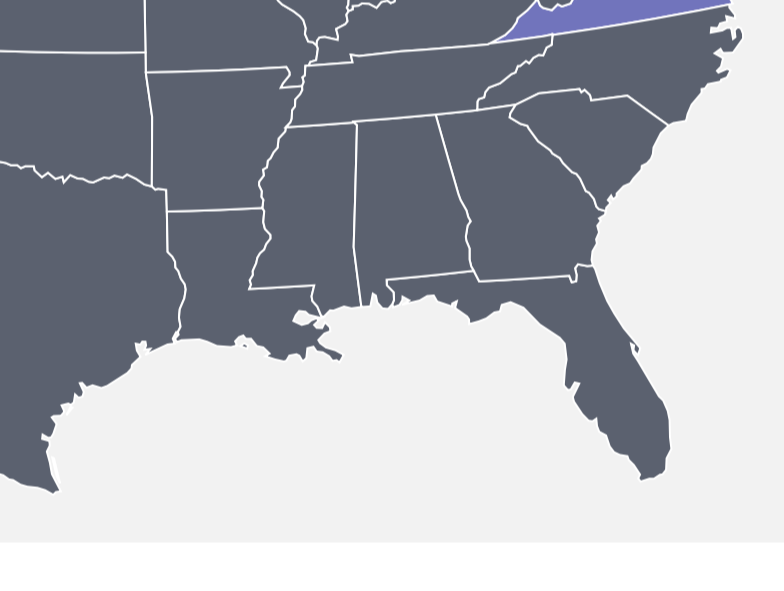
Patients with a combination of limitations may have complex needs. An experienced interdisciplinary treatment team works with every patient and their family.

This team may include:

- Assistive technology professionals
- Neuropsychologists
- Rehabilitation psychologists
- Nurse care managers
- Nurses
- Occupational Therapists
- Physiatrists
- Physical therapists
- Psychiatrists
- Social workers
- Special educators
- Speech-language pathologists



Where do patients live who are seen by the Specialized Transition Program?

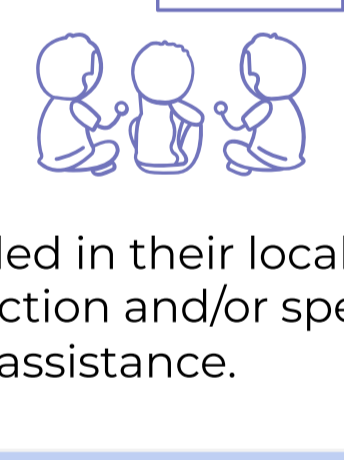


In fiscal year 2022, **73%** of patients came from **Maryland**, with **27%** coming from outside Maryland, including some from other countries.

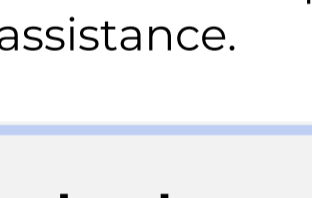
How much therapy do patients being treated in the Specialized Transition Program receive?

Patients in the Specialized Transition Program receive five days a week of intensive physical therapy, occupational therapy, speech-language therapy, social work, and/or psychology delivered by licensed/certified therapists.

School-aged Patients:
Receive an average of 3.4 hours of therapy five days a week.



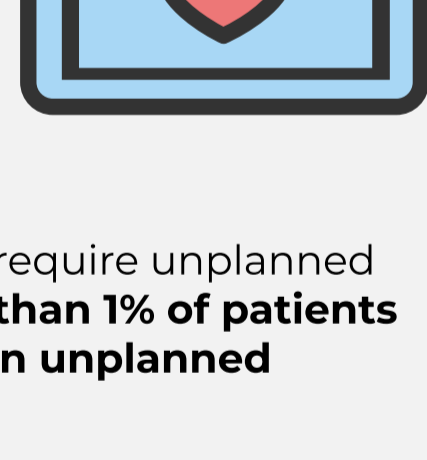
Pre-school Aged Patients
Receive an average of 2.5 hours of therapy five days a week.



In addition, patients enrolled in their local educational program receive educational instruction and/or special education consultation and school re-integration assistance.

What happens if a patient gets acutely sick or has a medical emergency while at STP?

STP has a nurse on-site at all times when the clinic is open, with the equipment and processes in place to respond to medical emergencies. If a patient becomes more seriously ill, or has a medical emergency, care can be obtained at The Johns Hopkins Hospital Pediatric Emergency Department.



If needed, an ambulance will be called for emergency transportation.

Occasionally, these more intensive medical needs require unplanned transfers to acute care. **In fiscal year 2022*, fewer than 1% of patients in the Specialized Transition Program required an unplanned transfer to an acute care setting.**

How are patients and their families involved in the care they receive from the Specialized Transition Program?

Kennedy Krieger is committed to providing person and family-centered care which is a collaborative approach to the planning and delivery of services. Our services reflect the person and family-centered care principles of participation; collaboration; information sharing; dignity and respect; and equity, diversity and inclusion.

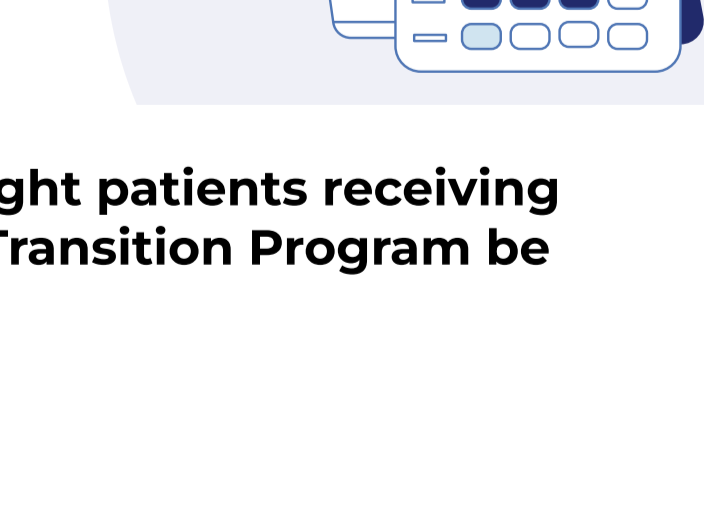


Individuals served and their family members are encouraged to participate in treatment planning, goal setting, family meetings, and education and training sessions.

How long do most patients receive treatment from the Specialized Transition Program?

Treatment varies from one patient to another, based on their needs and goals.

In fiscal year 22*, the average stay for a patient in the Specialized Transition Program was **32 days**.

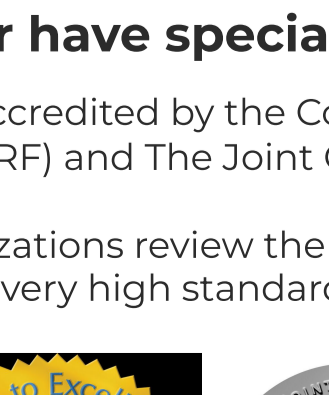


What kinds of improvements might patients receiving treatment from the Specialized Transition Program be expected to make?



87%
of primary admission goals met

What do patients and their families say about their experience at Kennedy Krieger Institute?



97% of caregivers expressed overall satisfaction with the program

Does Kennedy Krieger have special accreditation?

Kennedy Krieger Institute is accredited by the Commission on the Accreditation of Rehabilitation Facilities (CARF) and The Joint Commission.

Every three years, both organizations review the Institute to ensure all its programs meet or exceed the very high standards it sets for the care of its patients.



*FY 22 represents the dates from July 1, 2021 to June 30, 2022.