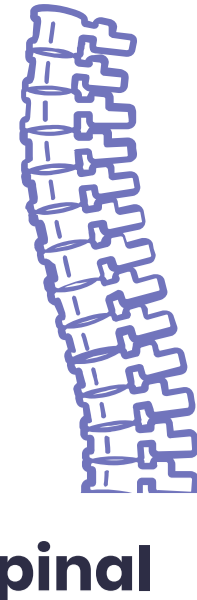


KENNEDY KRIEGER INSTITUTE: PEDIATRIC OUTPATIENT SPINAL CORD INJURY PROGRAM OUTCOME DATA

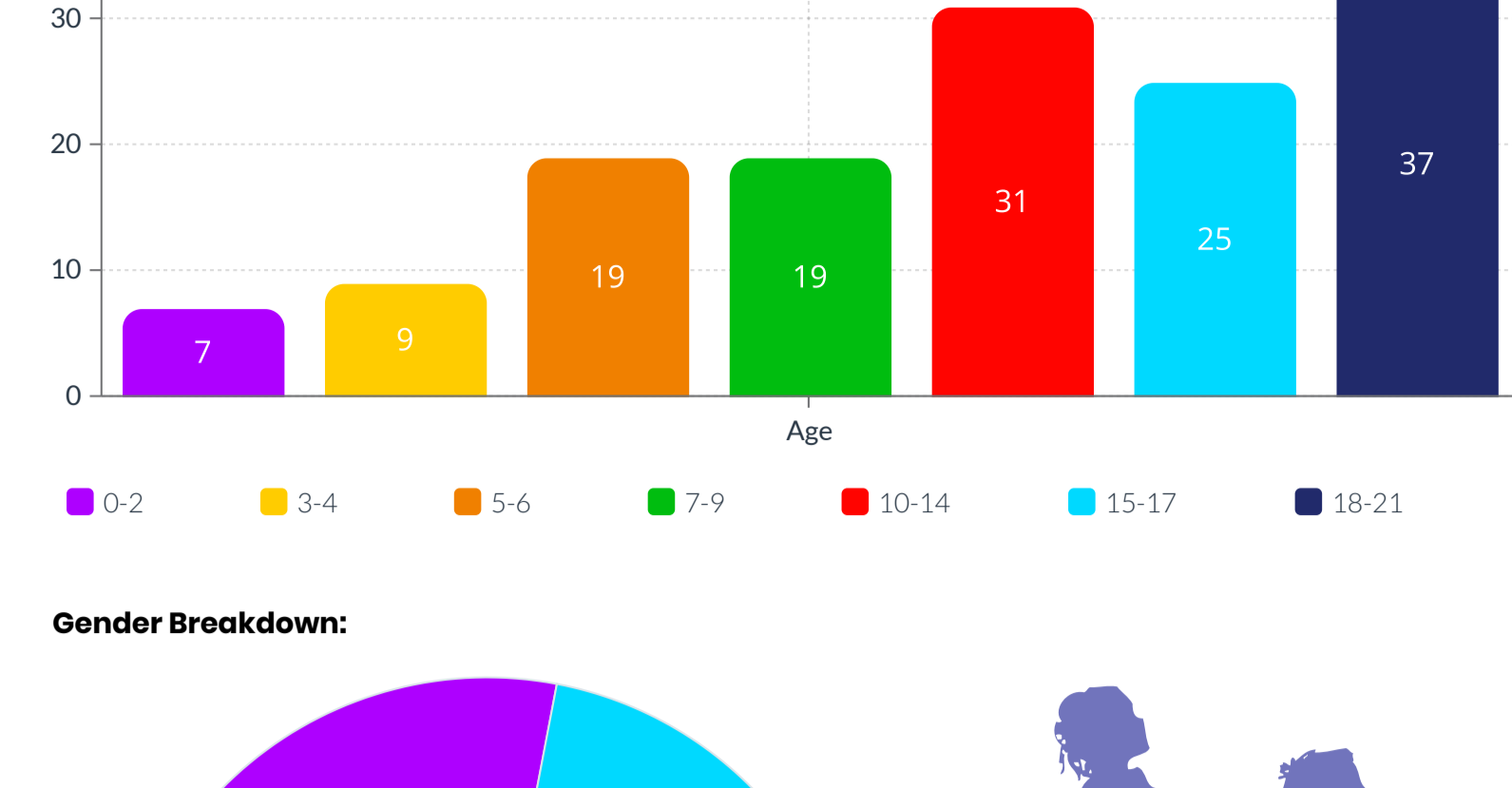


FY 21

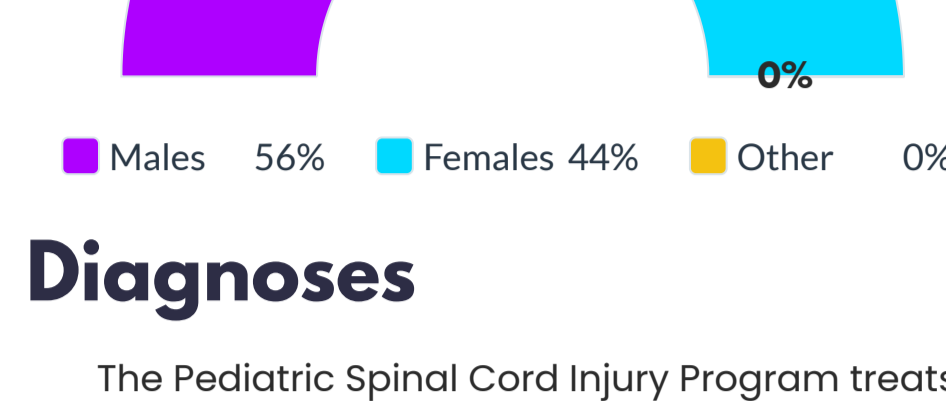
Who is treated in the Pediatric Outpatient Spinal Cord Injury Program at Kennedy Krieger?

During fiscal year 2021*, 147 children and adolescents with spinal cord injury/dysfunction were treated in the Outpatient Spinal Cord Injury Program.

Below is the age breakdown of those patients:



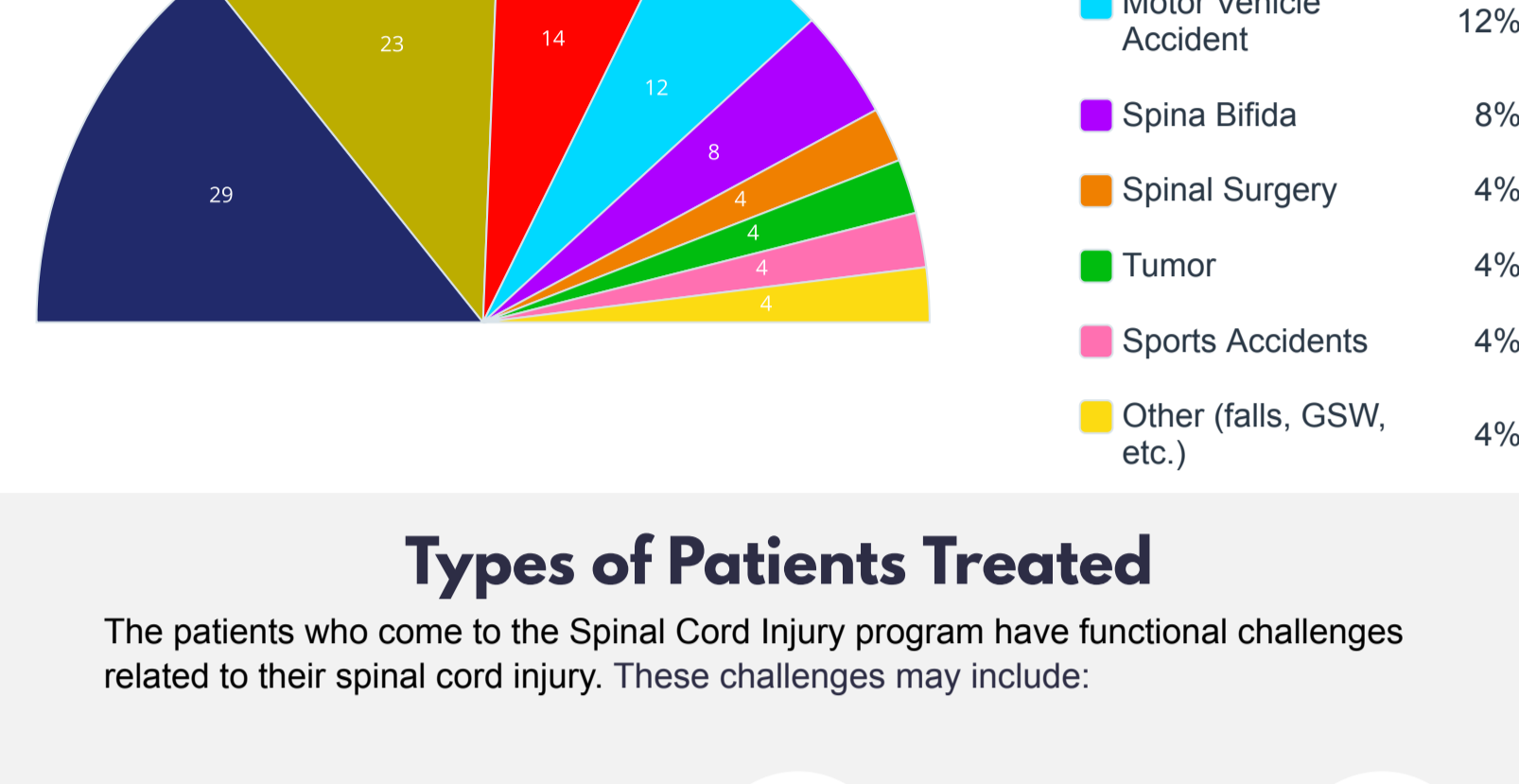
Gender Breakdown:



Diagnoses

The Pediatric Spinal Cord Injury Program treats children and adolescents who have experienced a variety of causes of their spinal cord dysfunction, both traumatic and non-traumatic.

Below is a breakdown of the most common diagnoses treated:



Types of Patients Treated

The patients who come to the Spinal Cord Injury program have functional challenges related to their spinal cord injury. These challenges may include:

BREATHING

BOWEL AND BLADDER DYSFUNCTION

ENGAGING IN ACTIVITIES OF DAILY LIVING (self-care)

MOBILITY

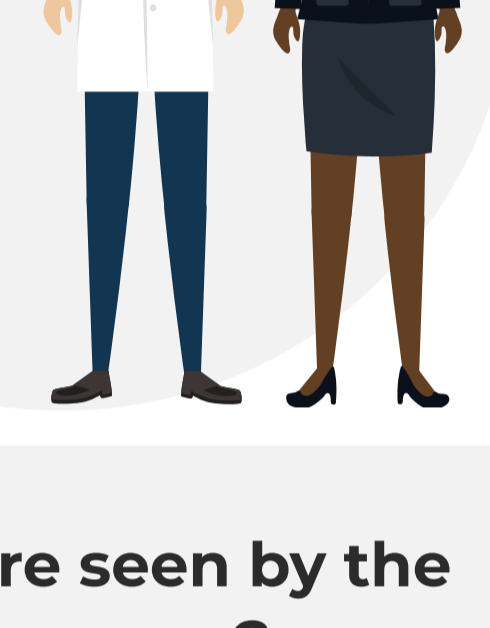
PERFORMING DAILY SELF-CARE ACTIVITIES

When appropriate, the providers will refer patients to additional medical services at Johns Hopkins Hospital or other hospitals with expertise in the care of individuals with spinal cord injuries.

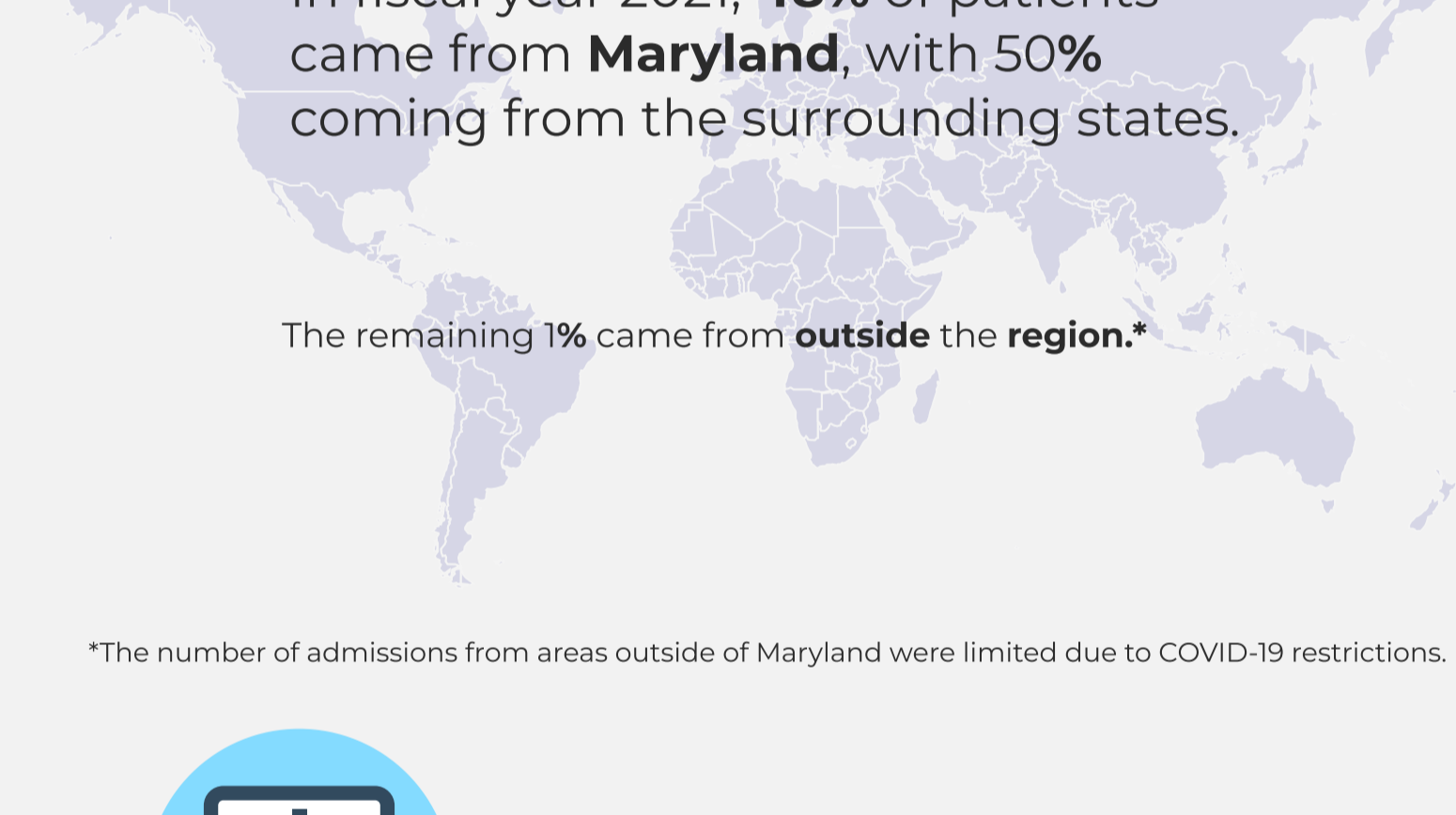
Interdisciplinary Treatment Team

This inpatient team may include:

- Aquatic Specialists
- Orthotists
- Assistive Technology Professionals
- Personal Trainers
- Child Life Specialists
- Physical therapists/ Assistants
- Nurse care managers
- Psychologists
- Nurse practitioners / Nurses
- Seating and Mobility Specialists
- Occupational therapists/ Assistants
- Social Workers



Where do patients live who are seen by the Inpatient Spinal Cord Injury Program?



*The number of admissions from areas outside of Maryland were limited due to COVID-19 restrictions.

How much therapy do patients receive while being treated in the Outpatient Spinal Cord Injury Program?

In the medically supervised outpatient therapy program, therapists work one-on-one with patients, focusing on achievement of goals set by the patient, physician and therapist.

The Spinal Cord Injury Program offers two unique therapy options:

Short-term intensive therapy:

In this **five-day-a-week** program, patients attend therapy for **two to three weeks** and receive a **minimum of three hours of therapy each day**.

Extended intensive therapy:

In this program, patients attend therapy **one to three times per week for eight to 12 weeks**, and receive a minimum of **two hours of therapy per session**. In addition, specialized Aquatic Therapy is available with either therapy option. This specialized therapy features innovative pools with multiple jets, built-in treadmills, video systems, and floors that operate on lifts to allow barrier-free entry and exit for patients in wheelchairs.

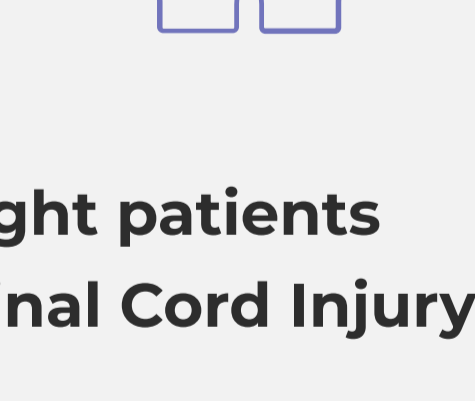
What happens if a patient gets acutely sick or has a medical emergency while an outpatient at Kennedy Krieger?

Kennedy Krieger has Advanced Life Support-certified medical staff members and nurses on-site 24 hours a day, seven days a week, with the equipment and processes in place to respond to medical emergencies.



How is a patient and their family involved in the care received from the Outpatient Spinal Cord Injury Program?

Kennedy Krieger is committed to providing person and family-centered care which is a collaborative approach to the planning and delivery of services. Our services reflect the person and family-centered care principles of participation; collaboration; information sharing; dignity and respect; and equity, diversity and inclusion.



Individuals served and their family members are encouraged to participate in treatment planning, goal setting, family meetings, and education and training sessions.

What kinds of improvements might patients receiving treatment from the Spinal Cord Injury Program be expected to make?

In fiscal year 2021, of those patients surveyed*:

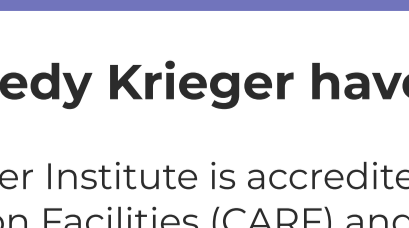
100% of patients remained living in the community.



100% of patients (Birth to 17 years) were participating in school programs (early invention/public/private/home school program).



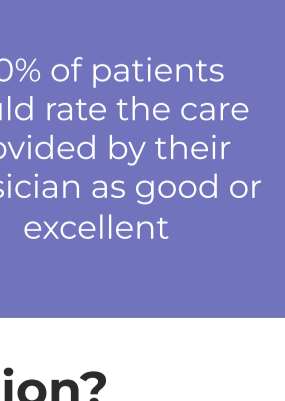
95% of patients between 18-21 are participating in the community (high school, college, vocational school, employed or volunteering).



97% of patients continued therapy without interruptions



What do patients and their families say about their experience at Kennedy Krieger Institute?



During fiscal year 2021*:

98% of patients would recommend Kennedy Krieger's spinal cord injury program to another patient with paralysis

100% of patients would rate their experience at Kennedy Krieger Institute as good or excellent

100% of patients would rate the care provided by their physician as good or excellent

Does Kennedy Krieger have special accreditation?

Kennedy Krieger Institute is accredited by the American Commission on the Accreditation of Rehabilitation Facilities (CARF) and The Joint Commission.

Every three years, both organizations review the Institute to ensure all its programs meet or exceed the very high standards it sets for the care of its patients.

*FY 21 represents the dates from July 1, 2020 to June 30, 2021.