

# KENNEDY KRIEGER INSTITUTE: FEEDING OUTCOME DATA

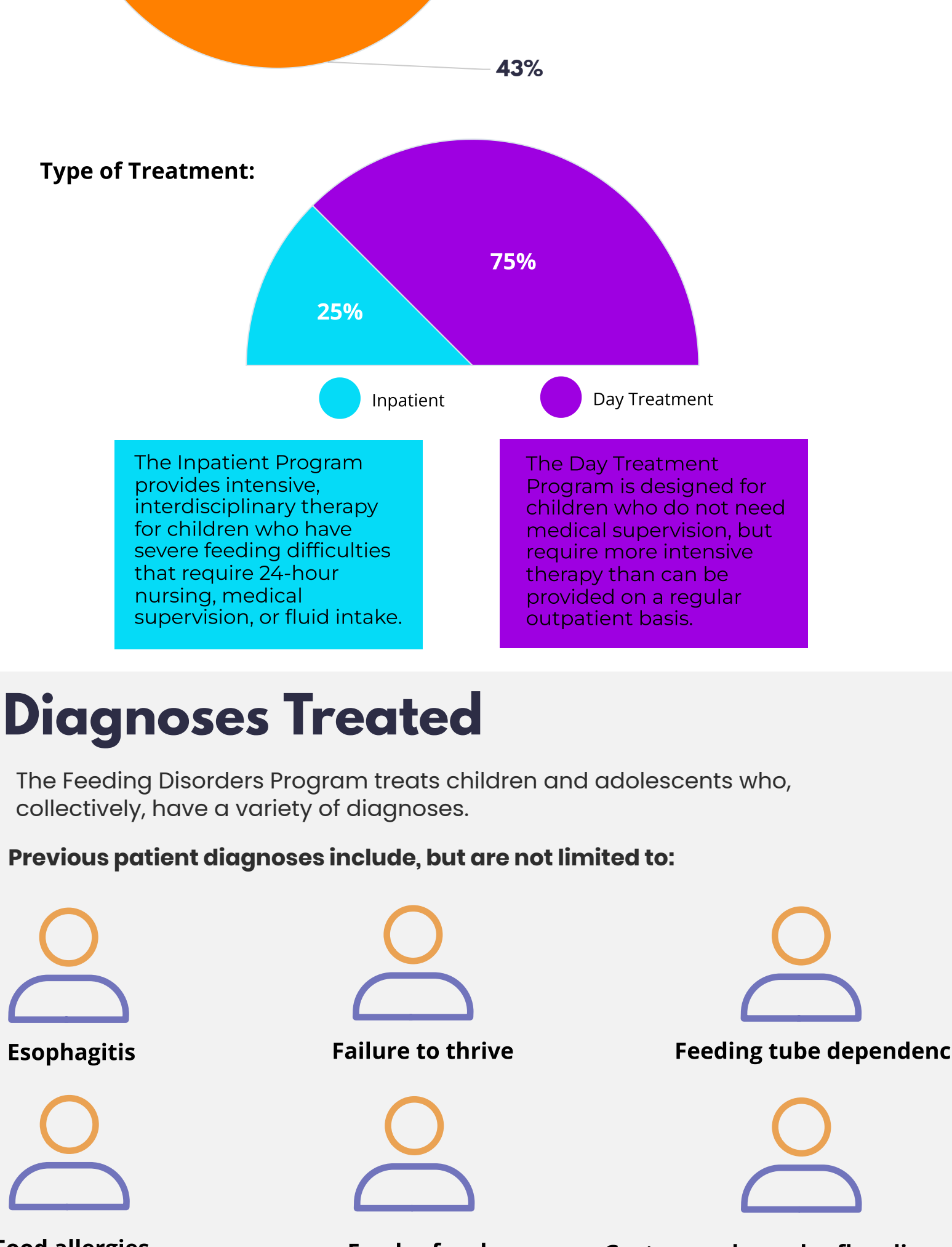


FY 21

## Who is treated in the Feeding Disorders Program at Kennedy Krieger?

During fiscal year 2021\*, 70 patients were treated by the Feeding Disorders Program at Kennedy Krieger Institute.

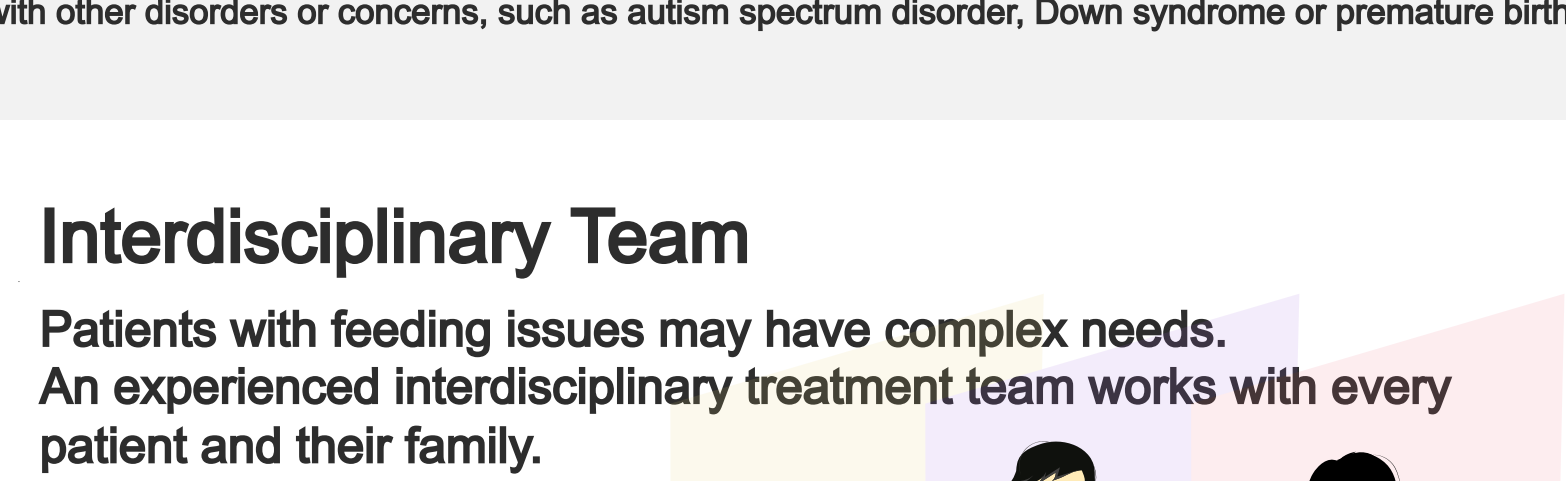
Below is a breakdown of the ages of those patients and the type of treatment they received:



## Diagnoses Treated

The Feeding Disorders Program treats children and adolescents who, collectively, have a variety of diagnoses.

Previous patient diagnoses include, but are not limited to:



Chief Feeding Concern:



The Feeding Disorders Program also specializes in treating children who have feeding challenges along with other disorders or concerns, such as autism spectrum disorder, Down syndrome or premature birth.

## Interdisciplinary Team

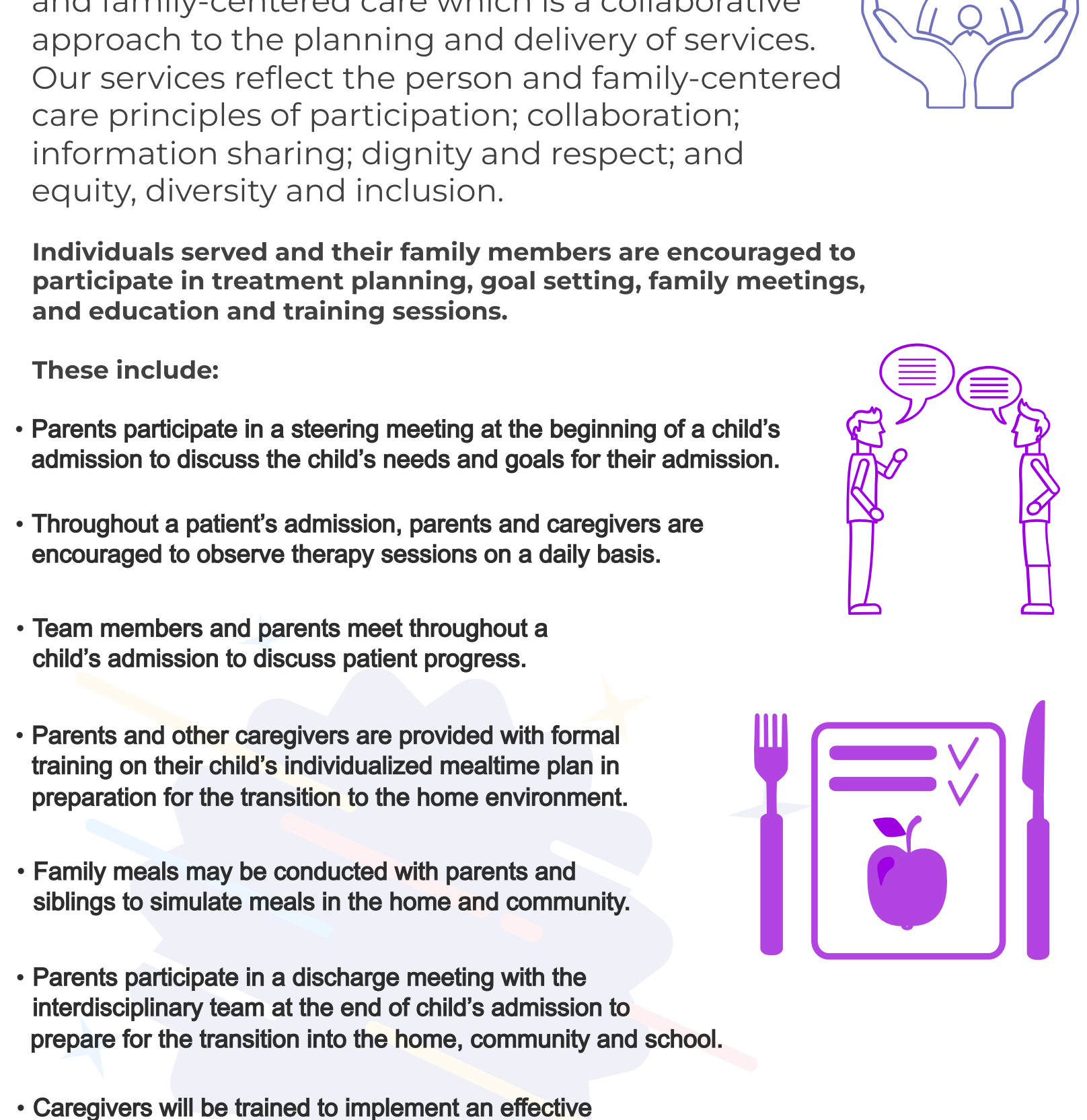
Patients with feeding issues may have complex needs. An experienced interdisciplinary treatment team works with every patient and their family.

- Behavior data specialists
- Behavioral psychologists
- Board-Certified Behavior Analysts
- Clinical specialists
- Developmental pediatricians
- Developmental playroom specialists
- Nurse case managers
- Nurse practitioners / Nurses
- Occupational therapists
- Pediatric gastroenterologists
- Pediatric nutritionists
- Registered nurses
- Social workers
- Speech-language pathologists

## Where do patients live who are seen by the Feeding Disorders Program?

The majority of patients treated in the Feeding Disorders Program are from Maryland but many travel from across the United States or internationally to receive treatment.

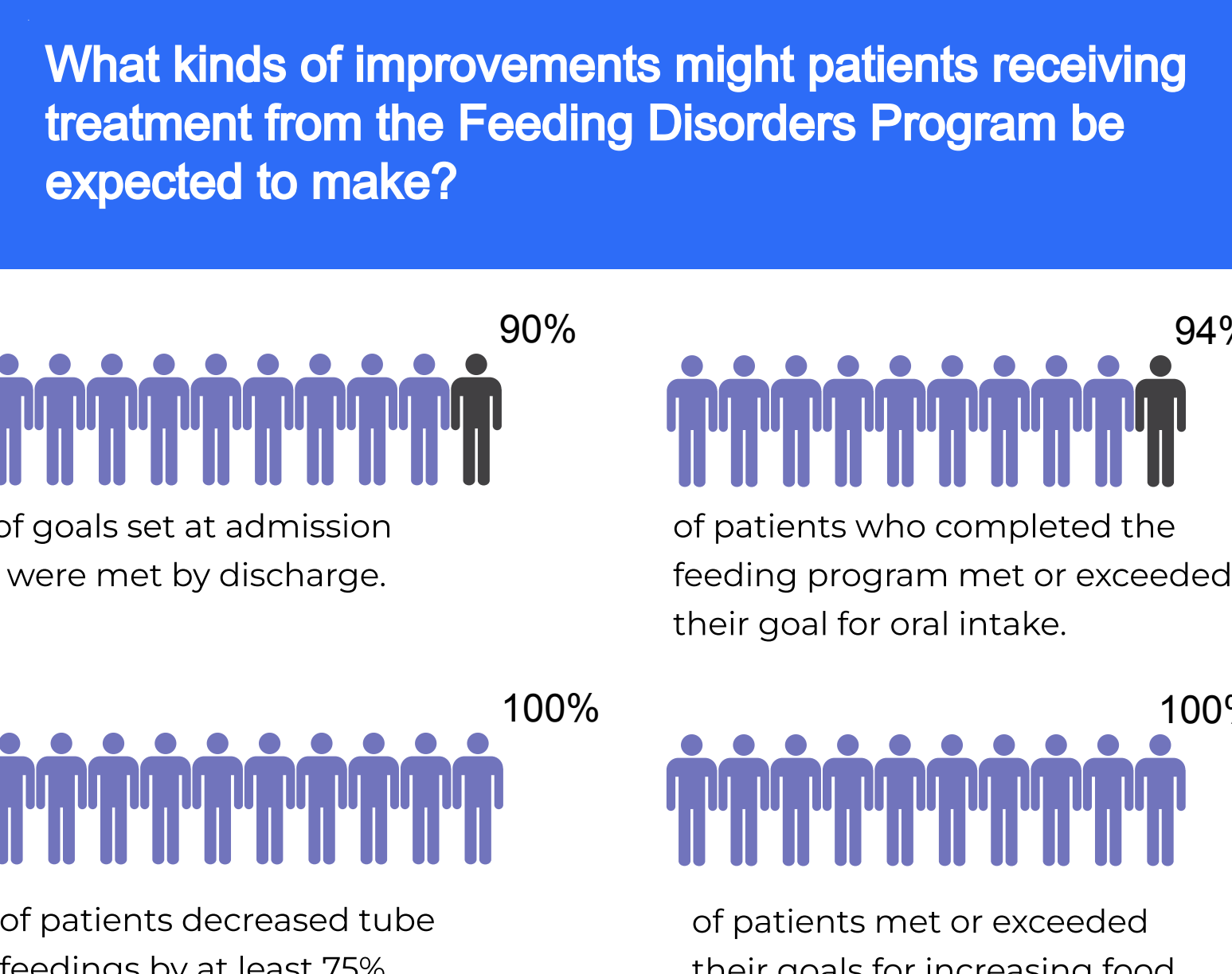
Since 2010, we have treated patients from 34 states and 10 other countries including Netherlands, Germany, Brazil, Panama, Qatar, and Saudi Arabia.



## How much therapy do patients receive while being treated in the Feeding Disorders Program?

Patients in the Feeding Disorders Program have regularly scheduled therapy with behavioral psychology, speech and language and occupational therapy.

While treatment plans vary by patient, each patient generally receives the following therapies:

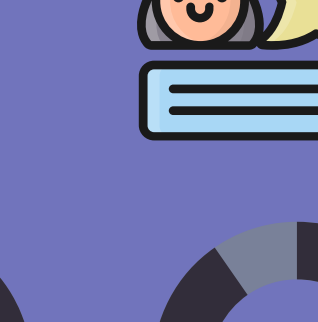


Patients are monitored daily by medicine, nursing, nutrition and social work.

Patients may participate in structured, supervised play in one of the two playrooms which are open for six hours Monday through Friday. The playrooms are not staffed on weekends; however, patients are welcome to use them with parental supervision.

## What happens if a patient gets acutely ill or has a medical emergency while an inpatient at Kennedy Krieger?

Kennedy Krieger has **Advanced Life Support-certified medical staff members and nurses on-site 24 hours a day, seven days a week**, with the equipment and processes in place to respond to medical emergencies.



Due to our proximity to and affiliation with The Johns Hopkins Hospital, we are able to admit patients with intensive, but stable medical needs, such as those requiring a ventilator for breathing.

Occasionally, these more intensive medical needs require unplanned transfers to acute care. **In fiscal year 2021\*, no patients in the Feeding Disorders Program required an unplanned transfer to an acute care setting.**

## How are patients and their family involved in the care of their child while participating in the Feeding Disorders Program?

Kennedy Krieger is committed to providing person and family-centered care which is a collaborative approach to the planning and delivery of services. Our services reflect the person and family-centered care principles of participation; collaboration; information sharing; dignity and respect; and equity, diversity and inclusion.



Individuals served and their family members are encouraged to participate in treatment planning, goal setting, family meetings, and education and training sessions.

These include:

- Parents participate in a steering meeting at the beginning of a child's admission to discuss the child's needs and goals for their admission.
- Throughout a patient's admission, parents and caregivers are encouraged to observe therapy sessions on a daily basis.
- Team members and parents meet throughout a child's admission to discuss patient progress.



- Parents and other caregivers are provided with formal training on their child's individualized mealtime plan in preparation for the transition to the home environment.
- Family meals may be conducted with parents and siblings to simulate meals in the home and community.



- Parents participate in a discharge meeting with the interdisciplinary team at the end of child's admission to prepare for the transition into the home, community and school.
- Caregivers will be trained to implement an effective mealtime protocol in preparation for discharge to home.

## How long do most patients receive treatment from the Feeding Disorders Program?

Treatment varies from one patient to another, based on their needs and goals.

In fiscal year 2020\*, the average inpatient admission in the Feeding Disorders program was **56 days**.

While the average admission for the day program was **37 days**.



## What kinds of improvements might patients receiving treatment from the Feeding Disorders Program be expected to make?



New Foods:



## What do patients and their families say about their experience at Kennedy Krieger Institute?



## Does Kennedy Krieger have special accreditation?

Kennedy Krieger Institute is accredited by the Commission on the Accreditation of Rehabilitation Facilities (CARF) and The Joint Commission.

Every three years, both organizations review the Institute to ensure all its programs meet or exceed the very high standards it sets for the care of its patients.



\*FY 21 represents the dates from July 1, 2020 to June 30, 2021.