

# KENNEDY KRIEGER INSTITUTE: COMPLEX REHABILITATION INPATIENT PROGRAM OUTCOME DATA

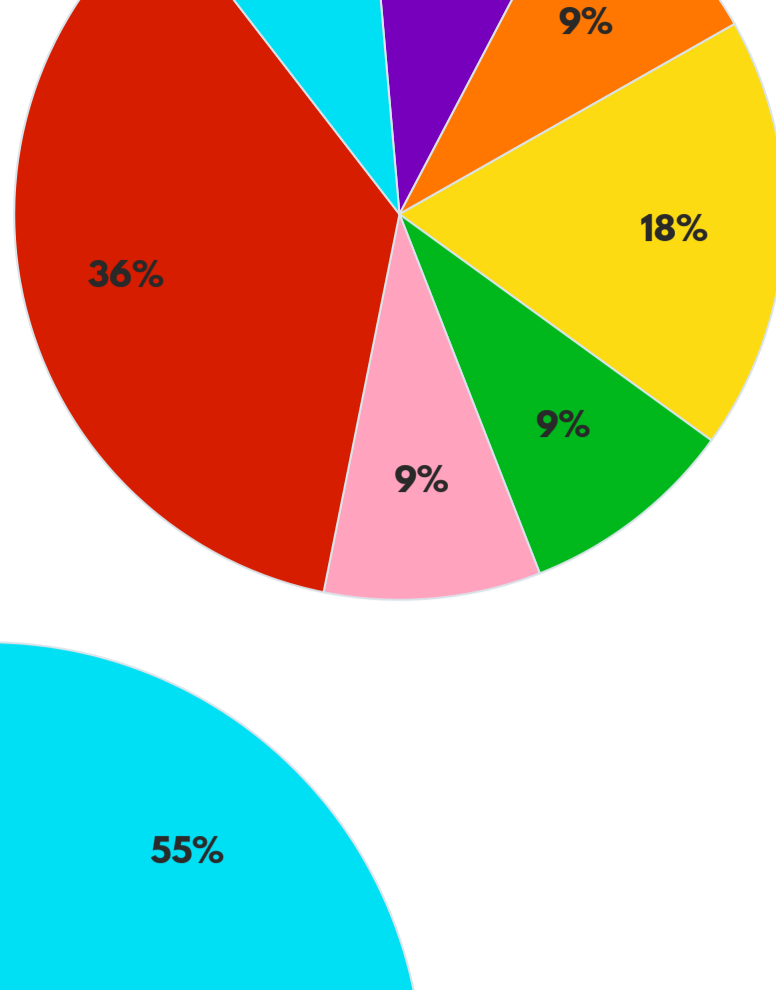
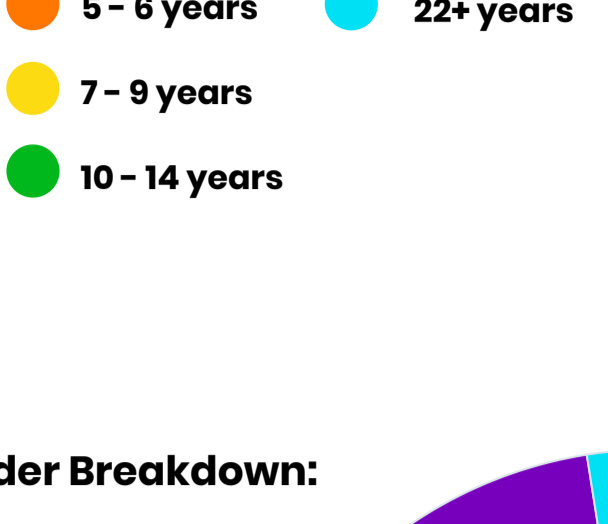
FY 21



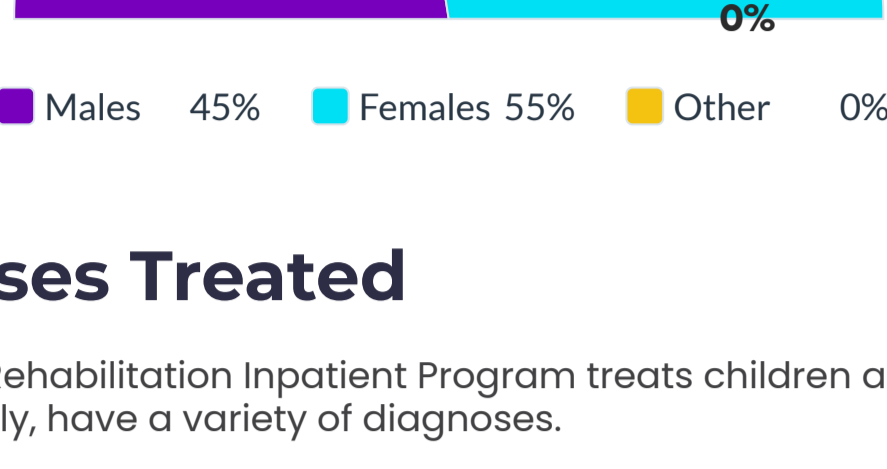
## Who is treated in the Complex Rehabilitation Inpatient Program at Kennedy Krieger?

During fiscal year 2021\*, 11 patients were treated by the Complex Rehabilitation Inpatient Program at Kennedy Krieger.

### Age breakdown of patients:



### Gender Breakdown:



## Diagnoses Treated

The Complex Rehabilitation Inpatient Program treats children and adolescents who, collectively, have a variety of diagnoses.

Below is a breakdown of the most common diagnoses treated:



## Types of Patients Treated

Patients who are admitted to the Complex Rehabilitation Inpatient program have limitations in at least one of the following areas:

- COMMUNICATION**  
(Understanding and speaking)
- ENGAGING IN ACTIVITIES OF DAILY LIVING**  
(Doing chores, eating)
- PARTICIPATING IN HOME, SCHOOL AND COMMUNITY ACTIVITIES**
- MOBILITY**
- PERFORMING DAILY SELF-CARE ACTIVITIES**

Patients who are admitted to the Complex Rehabilitation Inpatient Program must be medically stable and able to tolerate at least two hours of therapy per day.

Patients with tracheostomies and those requiring mechanical ventilation or diaphragm pacing systems are welcome on the inpatient unit.

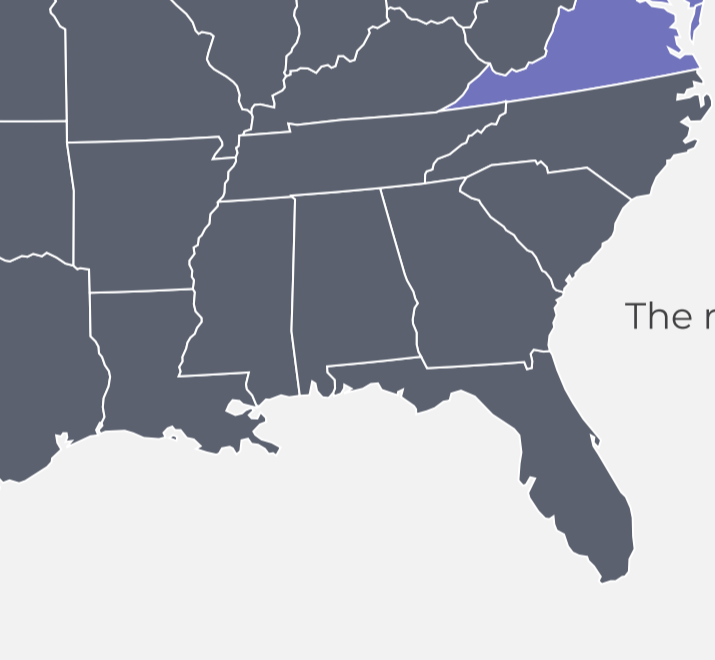
## Interdisciplinary Treatment Team

This inpatient team may include:

- Assistive technology professionals
- Child life therapists
- Pediatricians/Developmental pediatricians
- Hospitalists
- Neurologists
- Nurse care managers
- Nurse practitioners
- Occupational therapists
- Pediatric nutritionists
- Physiatrists
- Physical therapists
- Registered nurses
- Seating and mobility specialists
- Social workers
- Special educators
- Speech-language pathologists
- Therapeutic recreation therapists



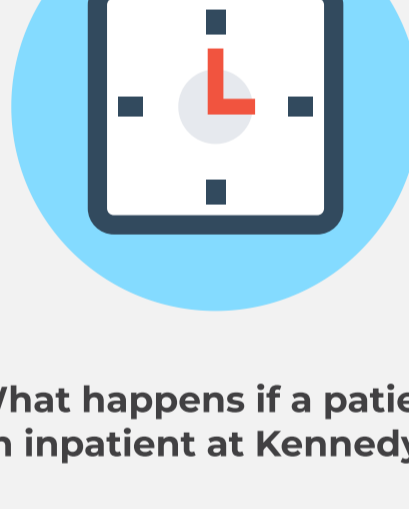
## Where do patients live who are seen by the Complex Rehabilitation Inpatient Program?



In fiscal year 2021, **87%** of patients came from **Maryland**, with **9%** coming from the surrounding states of **Washington, DC, Virginia, Pennsylvania and Delaware.**

The remaining **4%** came from **outside the region.\***

\*The number of admissions from areas outside of Maryland were limited due to COVID-19 restrictions.

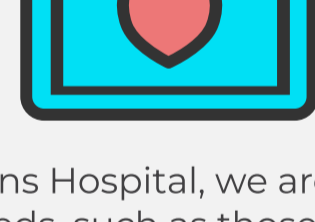


### How much therapy do patients receive while being treated in the Complex Rehabilitation Program?

Patients being treated in the inpatient Complex Rehabilitation Inpatient Program have at least **three hours of therapy daily.**

### What happens if a patient gets acutely sick or has a medical emergency while an inpatient at Kennedy Krieger?

Kennedy Krieger has **Advanced Life Support-certified medical staff members and nurses on-site 24 hours a day, seven days a week**, with the equipment and processes in place to respond to medical emergencies.



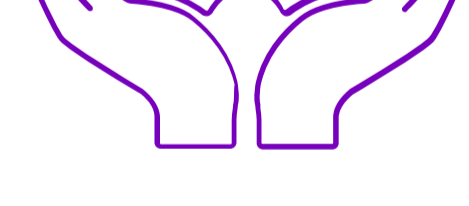
Due to our proximity to and affiliation with The Johns Hopkins Hospital, we are able to admit patients with intensive, but stable medical needs, such as those requiring a ventilator for breathing.

Occasionally, these more intensive medical needs require unplanned transfers to acute care. **In fiscal year 2021\*, two patients in the inpatient Complex Rehabilitation Inpatient Program required an unplanned transfer to an acute care setting.**



### How is a patient and their family involved in the care received from the Complex Rehabilitation Inpatient Program?

Kennedy Krieger is committed to providing person and family-centered care which is a collaborative approach to the planning and delivery of services. Our services reflect the person and family-centered care principles of participation; collaboration; information sharing; dignity and respect; and equity, diversity and inclusion.



**Individuals served and their family members are encouraged to participate in treatment planning, goal setting, family meetings, and education and training sessions.**

## How long do most inpatients receive treatment from the Complex Rehabilitation Inpatient Program?

Treatment varies from one patient to another, based on their needs and goals.

**In fiscal year 2021\*, the average length of stay on the Complex Rehabilitation Inpatient was 21 days.**

These lengths of stays are similar to the length of stays at other similar pediatric rehabilitation hospitals nationwide.

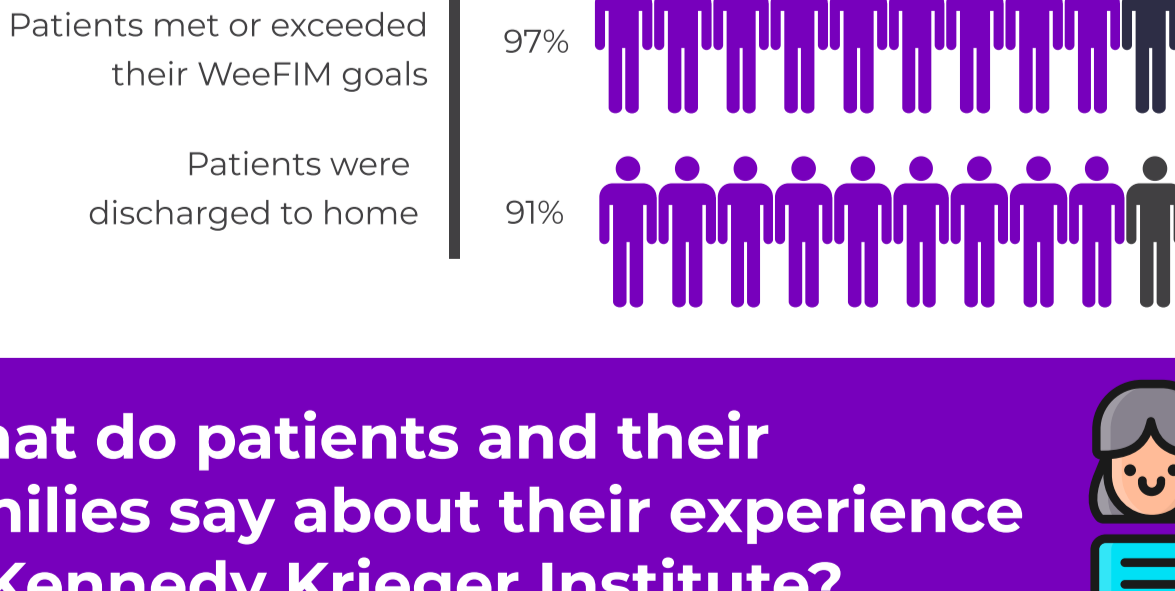


### What kinds of improvements might patients receiving treatment from the Complex Rehabilitation Inpatient Program be expected to make?

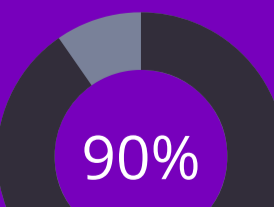
Kennedy Krieger Institute uses The Functional Independence Measure for Children (WeeFIM) for standardized pediatric outcomes measurement. This system is used by pediatric inpatient, outpatient, and community-based rehab programs worldwide and provides a simple, consistent, uniform tool that measures function in children.

Patients made improvements in their self-care skills and mobility skills that were similar or exceeded improvements made at other pediatric rehabilitation hospitals nationwide.

**In the Complex Rehabilitation Inpatient Program for FY 21:**



## What do patients and their families say about their experience at Kennedy Krieger Institute?



**95% of parents said the safety of their child was good or excellent.**



**93% of parents said the overall services provided were good or excellent.**



**93% of parents said the care provided by registered nurses (RNs) was good or excellent.**



**90% of parents said the care provided by doctors/nurse practitioners was good or excellent.**

## Does Kennedy Krieger have special accreditation?

Kennedy Krieger Institute is accredited by the Commission on the Accreditation of Rehabilitation Facilities (CARF) and The Joint Commission.

Every three years, both organizations review the Institute to ensure all its programs meet or exceed the very high standards it sets for the care of its patients.



\*FY 21 represents the dates from July 1, 2020 to June 30, 2021.