



Neurodiversity in the Workplace

A Collaborative National Conference

March 22–24, 2023



Kennedy Krieger Institute

Event Speakers & Entertainment



Keynote Speaker

Haben Girma

Human Rights Lawyer and Author

Keynote Speaker: Haben Girma

The first Deafblind person to graduate from Harvard Law School, Haben believes disability is an opportunity for innovation, and she teaches organizations the importance of choosing inclusion. Named a White House Champion of Change by President Obama, Haben has also received the Helen Keller Achievement Award as well as a spot on the Forbes 30 Under 30 list, and she has delivered a TIME100 Talk.

Keynote Speaker: Cody Clark

Cody Clark is a professional magician and autistic self-advocate from Louisville, KY. He places his magic within real life's magic moments, giving his shows a more personal and relatable touch. He also shares the honest ins and outs of being autistic both in his shows and in his "magi-talks" given to educators, students, and corporations.

Cody's biggest honors are sharing the Louisville Palace stage with magic legend Lance Burton, receiving the Society of American Magicians Rising Star of Magic award, and being awarded the title of Kentucky Colonial by his home state for making an impact on Kentucky's arts and social advocacy scenes.



Keynote Speaker

Cody Clark

Autistic Self-Advocate and Magician



The NeuroDiversity Rock Band

The NeuroDiversity Rock Band has been performing live concerts for the past several years. Jenn Lynn, Upcounty Community Resources (UCR), and Zach Lasko, GrooveToday, made their dream of a rock band program a reality by combining forces. A professional musician with years of touring and teaching experience, Zach contracts with UCR to produce the Monday Night Jam program. This program provides participants the experience of a real, professional jammin' rock band. Through UCR, the group has performed for their peers at a number of dances and at other Kennedy Krieger Institute events. The band continued practicing throughout the COVID-19 pandemic and can't wait to perform at Thursday night's reception!

UCR + GrooveToday = Dynomite!





Jeffrey Abel

Vice President, Local Programs, Special Olympics Maryland

Jeff Abel is Vice President, Local Programs at Special Olympics Maryland. In this role, he works closely with the staff members who provide community sports programming, Unified Champion Schools, inclusive health and fitness, the Young Athletes Program, adapted and unified physical education, and volunteer management. He also manages the organization's internship and AmeriCorps program. Prior to joining Special Olympics Maryland's staff, Jeff worked in higher education, most recently as Assistant Dean of Students at Mount St. Mary's University. Jeff received his bachelor's degree in Sociology and Anthropology, and his master's degree in Counseling from Lehigh University in Bethlehem, PA.



Laurie Ackles, DSW, LMSW

Director, Rochester Institute of Technology

Laurie Ackles, DSW, LMSW (she/her) is the Director of the Spectrum Support Program, a program that provides specialized support to over 100 autistic students at Rochester Institute of Technology (RIT) each year. Dr. Ackles' research interests are in working to integrate evidence-based, trauma-informed practices and implementation science principles into supports and programming for autistic college students and job seekers. Ackles speaks nationally and has authored several publications. She is a higher education consultant with College Autism Spectrum, and serves on the Advisory Board for the College Autism Network and the Neurodiversity Federal Workforce Project.



Corina Adams

Chief Communications Executive, Office of the Director of National Intelligence

Corina Adams is the Chief Communications Executive for the Intelligence Community Diversity, Equity, Inclusion, and Accessibility (IC DEIA) Office for the Office of the Director of National Intelligence (ODNI). Corina is responsible for writing speeches for the Director of National Intelligence, Principal Deputy Director of National Intelligence, and IC DEIA Chief for public engagements on Intelligence Community DEIA-related matters. Before joining ODNI, Corina served as a cyber analyst for the Central Intelligence Agency. Corina graduated magna cum laude from Robert Morris University with a B.A. in Journalism. Corina earned an M.A. in Interactive Journalism from American University.



Hala Annabi

Associate Professor of Information Management and Director of ACCESS-IT
University of Washington

Dr. Annabi is an Associate Professor of Information Management and Director of ACCESS-IT Research Group in the University of Washington's Information School. Dr. Annabi investigates diversity and inclusion initiatives aimed at recruiting, retaining, and advancing women, women of color, and neurodivergent employees. Her work is published in academic and industry outlets to advance the science and practice of inclusion. Dr. Annabi collaborates with industry leaders to establish best practices for inclusion which resulted in the publication of the Autism at Work Playbook [disabilityin.org] in partnership with Microsoft, SAP, JPMorgan Chase, and EY.





Emily Arneson

Conference Co-Chair, VP Government Relations, Kennedy Krieger Institute

Arneson serves as the Institute's assistant vice president of government relations. She enthusiastically joined the Kennedy Krieger team in 2019 after falling in love with the mission of the Institute while serving as an outside consultant. Public Administration, with a concentration in Non-Profit Administration from the American Military University.



Andrea Barnhart

Care Farming Network Project Manager, Red Wiggler Community Farm

Andrea is the Care Farming Network Project Manager, a program of Red Wiggler Community Farm. Since 2009, Andrea has managed and worked alongside people with intellectual and developmental differences in a Care Farm setting providing job coaching and mentorship. As Red Wiggler's Farm Manager, Andrea managed 15 neurodivergent employees, matching their strengths/abilities to jobs needed to operate a successful CSA. In establishing the Care Farming

Network, Andrea connects Care Farms and aspiring Care Farmers nation-wide so that they can learn from one another, and build capacity to create more meaningful work and leadership opportunities for neurodivergent people.



Andrew Begel, PhD

Associate Professor, School of Computer Science, Carnegie Mellon University

Dr. Andrew Begel, PhD is an Associate Professor in the Software and Societal Systems Department at Carnegie Mellon University. Prior to this, he spent over 16 years as a Principal Researcher at Microsoft Research. Andrew's goal is to create inclusive workplaces where all people, especially those with disabilities and the neurodivergent, can be successful, without discrimination. His recent work has helped people on the autism spectrum gain employment

and facilitate social interaction, helped blind software developers collaborate with their sighted colleagues, and used affective computing and biometrics to better understand how software developers do their work.



Nazaret Berhane

Program Manager, IC Centers for Academic Excellence, Office of the Director of National Intelligence

Nazaret Berhane is a Program Manager on the Intelligence Community Centers for Academic Excellence team at the Office of the Director of National Intelligence (ODNI). Mrs. Berhane also serves as Vice-Chair of the Women's Intelligence Network. Before joining ODNI, Nazaret started her career in the Intelligence Community as an Arabic and Tigrinya linguist with the

Federal Bureau of Investigation in 2004. Nazaret earned an M.S. in Management Information Systems from the University of Maryland. Nazaret likes to spend her free time with her family and advocates for mental health in East African communities to help normalize discussions about mental health.



Steve Blanks

Director of Partnerships, SEEC

Steve serves as SEEC's Director of Partnerships with over 20 years of experience. In his current role, Steve is developing more strategic ways SEEC engages with its external partners; families we support, employer community, people we support, funders/donors, volunteers, etc. As a liaison for SEEC's board, he has rejuvenated some of the board's processes and tools, and engaged board members through strategic work. Steve also serves as special projects lead

for agency-wide initiatives requiring executive oversight, such as investment activity and building-related matters. Steve has presented at regional, national and international conferences including TASH, APSE International Conferences & Project SEARCH Conferences.





Loden Coleman, MSW

Assistant Manager of Employment Programs, Els for Autism Foundation®

Loden Coleman, MSW is the Assistant Manager of Employment Programs at Els for Autism Foundation®. She graduated from The University of North Carolina at Charlotte where she received her master's degree in Social Work as well as a graduate certificate in Early Childhood Mental Health. Loden has experience utilizing and implementing different evidence-based strategies and therapy modalities across the lifespan. Loden has prepared clients for paid employment, implemented strategies to attain client goals, and provided supported employment for clients throughout the community. Currently, Loden collaborates with the Associate Director of Adult Services to develop, plan, implement and assess Employment programs.



Austin Colorite

Program Associate, BroadFutures

Austin serves as a program associate and mentor for BroadFutures. With two family members who have learning disabilities, he believes in the mission and vision of the organization. Previously he has worked as a Research Assistant at the Liechtenstein Institute on Self Determination where he focused on global migration governance. He graduated from Princeton University in 2021 with a degree in Public & International Affairs. During undergrad, he served as a Residential Advisor where he gained a passion for peer-to-peer mentoring and learned how to cultivate space for people of a variety of backgrounds.



Susan Conrad

Assistant Professor, Marymount University

Dr. Conrad is an assistant professor of IT and cybersecurity with expertise in privacy and workforce readiness. She has more than 25 years of IT industry experience with senior leadership roles. Her publications focus on workforce readiness and student experiential learning. She is the recipient of the College of Business, Innovation Technology and Leadership Innovation Award 2022, Faculty Teaching Award 2021 and Marymount Honors Faculty Award 2021.



Ethan Copeland

Kennedy Krieger Institute Employee

Ethan graduated from Towson University with a degree in Psychology in the Fall of 2020. He worked from November 2021 until September 2022 as a COVID-19 Health Screener at Kennedy Krieger Institute. When screening requirements ended, this position was no longer needed and Ethan found employment as a Classroom Assistant at Parents and Children Together Therapeutic Nursery (PACT). As a classroom assistant, Ethan is responsible for cleaning the multipurpose room and assisting the teachers when working with the children. Ethan's favorite thing about his work is feeling appreciated by the children. He also really enjoys interactions with the teachers and all the positive interactions with the kids. The biggest challenge of his current work is that some of the Pre-K children struggle with listening and following directions and expressing their emotions properly. Ethan enjoys drawing animals and cartoons, as well as playing the piano in his free time.





Simone Coulbourn

Behavior Support Specialist, SEEC

Simone started a career in IDD in 1994 as a Direct Support Specialist at the ARC of Montgomery County. In 1998, joined SEEC as a job coach. In 2013, became an advisor/leader for teams serving people who received personal supports and later received training to become a facilitator for MAPS and PATHS. In 2016, became a Registered Behavior Technician and contributed to SEEC's Behavioral Support Service. Simone also has experience as a

Mandt instructor, Trauma Informed Care Trainer with Assistive Technology.



Jeff Cowgill

Vice President - Neurodiversity, JP Morgan Chase

Jeff Cowgill, a 35-year veteran of JP Morgan Chase, established the first Emerging Talent Internship Program at JPMC Columbus for autistic students. Since Summer 2020, 22 student-interns have worked in 25 different roles at JPMC. Two students were hired to full-time roles, three others to part-time roles while completing their education. This program is developing a talent pipeline for JPMC while increasing the employability of neurodivergent individuals. Jeff

is active in his Worthington community schools and athletic programs; he is a Deacon at Worthington Presbyterian Church. As PTO President of Wilson Hill Elementary, he founded a school-wide reading tutoring program.

Tona Craviotto

Program Director, Employment Services, SEEC

Tona Craviotto is the Program Director of Employment Services at SEEC. He runs a person-centered and evidence-based program aimed at obtaining competitive integrated employment, providing job coaching, employer outreach, and employee retention services to the people SEEC supports. Tona joined the nonprofit world in 2005 after 10 years in the financial-banking field. He worked as a director for three large nonprofits in the DMV area dedicated to supporting the immigrant community, people experiencing homelessness, and returning citizens with long incarceration sentences. He developed and implemented a suite of vocational and life skill trainings that uplift people and communities through the power of employment. Tona holds a Bachelor's degree in Business Administration and Management from the University Tecnologica de Mexico.



Brian DeAtley

Director of Workforce Development, SourceAmerica

Brian DeAtley has a BA from the University of Maryland and MA in Education and Human Development from George Washington University.



Kathryn Dow-Burger

Clinical Associate Professor, Department of Hearing and Speech Sciences
University of Maryland

Kathy is a nationally-certified, Maryland State licensed speech-language therapist and Associate Clinical Professor at the University of Maryland (UMD) Department of Hearing and Speech Sciences (HESP). In 2019, Kathy was awarded the Excellence in Diversity & Inclusion Award in the College of Behavioral and Social Sciences for her work in many of the programs

she has developed and overseen. Kathy was the Co-Director of the University of Maryland Autism Research Consortium (UMARC) from 2016 - 2022, the founder of the Social Interaction Group Network for All (SIGNA) and the UMD Teen Executive Function for Effective Cognitive Transformation (EFFECT) programs.





Nancy Eaby

Program Director, Transition Services, SEEC

Nancy is the Program Director for Project SEARCH programs at the National Institutes of Health, Montgomery County Government, The Smithsonian Institution and Embassy Suites/Capital Hilton, supporting over 150 people across the DC Metropolitan area. Nancy assists with strategic planning for growth and sustainability, as well as management of operations and on-site teams. Nancy works closely with partners, families, and funding entities to ensure collaboration and teamwork. She also works on broader organizational leadership initiatives that focus on continuous improvement and best practices. Helping all individuals lead fulfilled lives through their work and community is the cornerstone of her career.



Lauren Eaton

Behavior Support Services Director, Itineris

Lauren is a Behavior Analyst and the Behavior Support Services Director for Itineris, a non-profit that serves adults on the autism spectrum. At work, Lauren focuses on using the power of positive reinforcement to improve client progress, staff development, and all aspects of the program. Lauren is adjunct faculty at Simmons University and co-founder of the Clay Hill Public Charter School. She completed her Bachelor's at Tulane University, received her Master's from UMBC, and completed her clinical supervision at Kennedy Krieger Institute, the Department of Psychiatry and Behavioral Sciences at Johns Hopkins School of Medicine, and Ivymount School.



Kendra Evans, MAT

Coordinator, Rochester Institute of Technology

Kendra Evans, MAT (she/her) is the Coordinator of the Neurodiverse Hiring Initiative (NHI) at the Rochester Institute of Technology (RIT). NHI facilitates myriad programs that build the confidence and job readiness skills of autistic job seekers, provides guidance and support to employers, and creates unique opportunities connecting hiring managers with RIT's highly-skilled neurodiverse applicant pool. Kendra has three teenage children, loves to exercise and do logic puzzles, and her last meal would be a soft pretzel and an IPA at a ballpark, preferably Wrigley Field.



Amy Faraone

Coordinator of Vocational & Career Services, League School of Greater Boston

Amy Faraone holds a Bachelor's Degree in Child Development and the Humanities and graduate certificate in Applied Behavior Analysis. After initial careers working with medically fragile and criminally involved youth, Amy entered the special education field in direct residential care then as a clinical supervisor and crisis intervention trainer. She later joined the League School as Coordinator of Vocational and Career Services where she works with students aged 12-22 years, helping them to acquire pre-vocational and vocational skills to work on campus, in the community at one of their 30 work sites, as well as in their home communities.



Jennifer Faust

Director of Operations, Greens Do Good

Jennifer Faust has worked at REED since 2012. In her current role as Director of Operations for the REED Foundation for Autism and Greens Do Good, she oversees partnerships and projects that focus on expanding education, services, and workforce development for individuals with autism. She also co-hosts REED's podcast Changemakers In Autism with CEO Chantelle Walker. Jen has a Bachelor of Arts in English from North Carolina State University. She is inspired by the values that are essential to REED's mission and challenging the status quo for individuals with autism.





Jillian Fisher-Bouchelle, MSW, LMSW

Program Director of Health and Quality Assurance, SEEC

Jillian Fisher-Bouchelle, MSW, LMSW, is the Program Director of Health and Quality Assurance at SEEC. In this role, Jillian oversees SEEC's Clinical Services, including Behavioral Support Services. Jillian joined SEEC in 2015 and worked for Project SEARCH Montgomery County before joining the Knowledge Management team. In her early career, Jillian served as Resource Coordinator for low-income senior citizens and people with disabilities in Baltimore City. She also worked in the

child welfare system in Baltimore City, serving as a social worker to children in treatment foster care.



Nancy Forsythe, MA, EdS

Sr Faculty Specialist/Disability Inclusion, University of Maryland

Nancy Forsythe, MA., EdS., is a subject matter expert in disability inclusion at work and speaks widely on this topic. Nancy currently works as a Senior Faculty Specialist in Disability Inclusion at the University of Maryland University Career Center. There, she supports students in the career preparation, job search, and on-boarding processes and works closely with employers

to improve their capacity to hire and retain people with disabilities. She has a background in social science research and vocational rehabilitation.



Elizabeth Foster

Director of Career Exploration and Development, Melwood

Elizabeth Foster is Director of Career Exploration and Development for Melwood Horticultural Training Center. Elizabeth has 35+ years of experience supporting people with disabilities. She holds a B.S. degree in Special Education from the University of Maryland at College Park and an A.S. degree in Severe Disabilities from the University of Maine at Farmington. Elizabeth was a certified special educator in Maine, Maryland, Virginia, and North Carolina and also

served as a National Education Association local affiliation president. Elizabeth serves her community on several local and statewide commissions and committees.



Dr. Moraima Garcia Rohena

Clinical Psychologist & Autism Specialist

Moraima was born in Puerto Rico and has a doctorate degree in Clinical Psychology from the University of Puerto Rico and graduate certificate in Developmental Deficiencies from the Graduate School of Public Health at the Medical Sciences Campus, PR. At her private practice, she is involved in collaborative work and agreements with agencies, institutions, universities and pediatric centers in the country and outside the country in support of the wellbeing of the

population with functional diversity, mainly young people and adults with ASD. She teaches at the University of Puerto Rico, and coordinates the Master's Program in Autism Disorders at the Albizu University.



Tara Haney

Intern Program Lead, Lockheed Martin

Tara Haney is the Human Resource Business Partner for the Rotary and Mission Systems business area within Lockheed Martin. In her former role, she oversaw the Intern and Co-op Program from the time the candidate accepts their offer to the point when their position concludes. Tara managed the intern and co-op experience at all RMS sites, which covers over 800 interns and co-ops across over 30 states. Previously, Tara served as a college recruiter with LM RMS, as well

as the Recruiting Manager and the Washington Nationals baseball team. She graduated from Virginia Tech with a degree in Psychology.





Nicole Hardesty, CESP

Program Supervisor, Itineris

Nicole Hardesty, CESP is a Program Supervisor at Itineris, whose mission is to empower adults on the autism spectrum to live meaningful lives throughout their lifespan. Currently, Nicole oversees a caseload of 14 adults and 6 staff. She is passionate about ensuring that all of our clients are working toward and achieving their goals and spending meaningful days with her team. Nicole is also currently working on a TAP Grant Leadership team to learn more about

and improve Itineris' employment services. She received her B.A. in Psychology with a minor in Family Studies from Towson University.



Erin Harris

Clinical Social Work Manager, The Ohio State University Nisonger Center

Erin Harris is an independently licensed social worker at the Ohio State University Nisonger Center. She is the Clinical Social Work Manager for the Autism College Experience (Ace!) program. She serves as the social work faculty for LEND, Leadership Education in Neurodevelopmental Disabilities, an advanced graduate interdisciplinary training program and teaches as a community lecturer for the OSU College of Social Work. Prior to Nisonger Center,

Erin was a behavioral health therapist at Nationwide Children's Hospital Center for Autism Spectrum Disorders. In her free time, you can find Erin and her husband raising their daughter and working a small farm.



Anita Hawkins

Strategic Executive, Special Security Directorate NCSC, Office of the Director of National Intelligence

Anita Hawkins is the Strategic Executive for the Special Security Directorate of the National Counterintelligence and Security Center (NCSC) at the Office of the Director of National Intelligence (ODNI). Ms. Hawkins is responsible for personnel security policy development and clearance reform under the federal Trusted Workforce 2.0 framework. Before joining NCSC,

she served as Program Manager for the ODNI Continuous Evaluation Program, Deputy Assistant Director for Technology and Cyber, and ODNI Export Control liaison. A retired Navy Meteorologist and Oceanographer, Anita earned a B.S. in Aeronautics from Embry-Riddle Aeronautical University and M.S. in Strategic Intelligence from the National Intelligence University.



Brittany Heine

Subject Matter Expert, Upward Mobility

Brittany has extensive experience managing non-profit agencies and social service programs that impact persons with disabilities. As part of her responsibilities on the Workforce Development team, Brittany manages the development of certification programs for a network of service providers that provide support to over 35,000 working adults with disabilities. At SourceAmerica, Brittany works closely with hundreds of Community

Rehabilitation Programs (CRP) to align national training programs with workforce trends and CRP needs. Brittany has a BS in Social Work from Lock Haven University and a MS in Public Administration, with a concentration in Non-Profit Administration from the American Military University.





Stacey Herman, MS Ed., CESP

Conference Co-Chair, AVP Neurodiversity & Community Workforce Development
Kennedy Krieger Institute

Herman is the assistant vice president of neurodiversity and community workforce development at Kennedy Krieger. Her role includes the creation and supervision of programs designed to support individuals with disabilities as they transition to the workforce and access their community.



Lauren Howard

Director of Resources, Sensory Tool House, LLC

Lauren Howard, neurodivergent, currently lives with her spouse and three children in Olympia, Washington. An Army wife of twenty years, she has previously called California and North Carolina home. Lauren attended the University of California, Davis and received a Bachelor of Science in Neurobiology, Physiology and Behavior. Her work includes advocating for inclusive community events and access, providing resources, and managing a neurodivergent staff.

When she's not working to build meaningful connections in her community at Sensory Tool House, LLC, Lauren enjoys spending time with her family kayaking, hiking, and gardening.



Caroline Hubbard Pineau

Associate Director, Itineris

Carrie is the Associate Director at Itineris. Her roles there include: corporate training, quality assurance/compliance, admissions, and advocating to enhance the services available to adults with autism. Carrie holds two master's degrees in Grief Counseling and Social Work. Carrie is licensed and while her foundation is in autism, she is passionate about psychotherapy, especially trauma focused therapy. Part-time, Carrie is a Clinician for the Mobile Crisis Team,

a police-based unit attending to the needs of persons experiencing a crisis. Carrie was one of Maryland's Top 40 Women Under 40 in 2014 and 2016 for contributions to her community.



Abigayle Jayroe

SVP Strategy, NEXT for AUTISM

As SVP of Strategy at NEXT for AUTISM, Abigayle Jayroe broadens the reach and scope of programming to impact the autism community nationally. Previously, in her role at Saint Joseph's University's Kinney Center, Abigayle ensured crucial services were accessible to individuals with autism across their lifespan. Most recently, she spearheaded the creation of the nation's first Neurodiversity in the Workplace minor designed to create a generation of business professionals

equipped to cultivate inclusive workplaces. Today, Abigayle serves on Special Olympics' Philadelphia's Advisory Board and actively participates in the movement to make Philadelphia the most inclusive city in the nation.



Carolyn Jeppson

Co-Founder, President and CEO, BroadFutures

Carolyn is a Co-Founder and the CEO/President of BroadFutures. She is passionate about creating innovative solutions to empower young neurodivergent people to succeed in education and the workforce. Carolyn speaks nationally on the benefits of a diverse workforce that is inclusive of disabilities, as well as the value proposition of internships for young neurodivergent people. She has devoted over 20 years serving on Nonprofit Boards that are committed to

enriching the lives of individuals with disabilities. Carolyn is also an experienced litigator with a career focused in the areas of insurance defense, medical malpractice, professional liability and financial institutions.





Tom Keating, PhD
CEO, Cognitopia

Tom Keating, Ph.D. is founder and CEO of Cognitopia, home of the Cognitopia Platform for Self-Determination, emphasizing tools for IEP and ISP self-direction, goal management, multimedia routines for task analysis, and team coordination. He is also a Courtesy Research Associate in the Computer and Information Sciences Department of the University of Oregon. Keating's perspective in all of his work has been strongly influenced by his experience of 31 years as a caregiver for a brother who experienced autism.



Karley Kent, BA
Employment Specialist, Els for Autism Foundation®

Karley Kent, BA, is an Employment Specialist at the Els for Autism Foundation in Jupiter, Florida. Karley graduated from the University of Toronto with a B.A. in Psychology and Criminology and has worked and volunteered in various roles within psychology, research and special education. As an Employment Specialist, Karley helps improve workplace neurodiversity by assisting adults with autism in finding meaningful employment, and creating employer partnerships to match clients to ideal positions that benefit both the client and the employer. Karley builds community awareness by attending networking and employment events and presents at conferences related to autism, employment and neurodiversity.



Karen Krainz Edison, MSW, LSW
Program Manager, The Ohio State University Nisonger Center

Karen Krainz Edison, MSW, LSW, manages Ace! at The Ohio State University Nisonger Center, supporting academic and social success for autistic college students at The Ohio State University and other Central Ohio colleges. Karen earned her Master of Social Work from OSU (2017) and is a LEND fellow. Additionally, she has an extensive background in business management, enabling her to provide career direction, design new programs, and develop community partnerships focused on autistic adults. She is on the board of a local non-profit, the Social Work Community Advisory Board of Capital University, and the College Autism Summit's Research Symposium committee.



Faris Kronfli, PhD
Behavior Analyst, University of Florida Center for Autism and Related Disabilities

Dr. Kronfli received his Ph.D. in Psychology from the University of Florida in 2019. While at the University of Florida, Dr. Kronfli helped establish a social skills clinic for adolescents and adults on the spectrum and has continued to focus on developing programs to support individuals as they transition to adulthood. He was the recipient of the 2018 B.F. Skinner Foundation Florida Graduate Student Research Award and the 2019 Christopher Rubow Memorial Award. He is currently an education specialist for the Center for Autism and Related Disabilities at the University of Florida.



Chiara Latimer
Co-Director, Center for Neurodiversity & Program Coordinator, Autism PATH Program
Rowan University

Chiara Latimer is Coordinator of the Autism PATH Program and Co-Director of the Center for Neurodiversity at Rowan University. This program is designed to support the transition of neurodivergent students into meaningful employment. Chiara has dedicated 10 years of her career to supporting neurodiverse students in clinical and educational settings. She teaches courses on career development, self-advocacy, and the transition to college as an adjunct faculty member. Chiara served as the inaugural co-chair of the Neurodiversity Affinity Group for the Eastern Association of Colleges and Employers. In 2022, Chiara was recognized by ROI-NJ as a Diversity & Inclusion Influencer.





Oscar Martinez
CORE Foundations Community Member

Oscar graduated in 2019 from the Kennedy Krieger School in Baltimore, Maryland. Prior to graduating from high school, Oscar participated in Project SEARCH. Oscar did a fantastic job working in the facilities department as an inventory technician making deliveries and stocking shelves. Following graduation from Project SEARCH, Oscar began volunteering with Animal Safe Haven and Adoption within a Petco store location while being supported by CORE Foundations staff. Petco store managers noted Oscar's dedication and diligence and offered him a paid position as a sales associate. Oscar acknowledges that he enjoys this job, and he is smart. His favorite thing about the position is stocking the dog and cat food. He noted that it can be difficult to sweep the floor.



Katherine McLaughlin
Founder, CEO, and Lead Trainer, Elevatus Training

Katherine McLaughlin, M.Ed., AASECT Certified Sexuality Educator, is the Founder, CEO and Lead Trainer for Elevatus Training. As a national expert on sexuality and I/DD she trains professionals, parents and individuals to become sexual self-advocates, and peer sexuality educators. She is the author of, Sexuality Education for People with Developmental Disabilities curriculum and two online courses: Developmental Disability and Sexuality 101 and Talking to Your Kids: Developmental Disabilities and Sexuality for parents. She has spent her 25+ year career committed to elevating the status of all people, which is why the name of her growing company is Elevatus Training.



Katie McMurray
CEO/Founder, Sensory Tool House, LLC

Katie McMurray is the founder of Sensory Tool House, LLC, the only retail establishment that emphasizes service to neurodivergent and/or disabled persons in Washington State. As a neurodivergent person, she understands the barriers to access in communities that lead to greater unemployment in the neurodivergent population. She also understands the value neurodivergent staff members bring, having a 90% neurodivergent staff. Katie's experience as a schoolteacher, vocational counselor, certified disability management specialist and caregiver has given her a unique skill set which qualifies her to train educators, community organizations, and employers in supporting and empowering neurodivergent individuals.



Loralyn Mears, PhD
Founder, STEERus

Loralyn Mears, PhD, has held executive leadership roles in marketing and innovation for three Fortune 100s and several tech startups. Along the way, she's launched dozens of products, startups, and Centers of Excellence. As a recognized author and National Gold Medal book winner, university guest lecturer, and mentor, Loralyn put her experience in higher ed and tech into founding STEERus, the world's first Soft Skills Academy. She's determined to close the gap between education and work. As a social entrepreneur, she focuses on enabling underserved communities, particularly those with special needs.



Sam Mitchell
Executive Director, Autism Rocks and Rolls Corporation

Sam runs his own podcast and non-profit called, Autism Rocks and Rolls Corporation. It has grown over the last three years and has become very, very successful. He is an international speaker, TEDX speaker, Executive Director, podcaster writer, and podcast coach.





Bette Ann Mobley, MS

Program Administrator, Maryland ABLE

Bette Ann has worked with state and national organizations in the field of intellectual and developmental disabilities for more than 41 years. In addition, served in many leadership roles supporting people with disabilities through advocacy, developing and implementing quality systems, and providing consultation to organizations that provide supports and services. As an active member of ABLE today and as the Program Administrator for the Maryland ABLE program for the last 5 years, she has helped to share this new opportunity for people with disabilities and their families to finally save and invest assets without risk of losing critical means tested benefits.



Felicia Nurmsen

Managing Director of Employer Services, National Organization on Disability

Felicia Nurmsen is the Managing Director of Employer Services, National Organization on Disability. She helped develop and deliver NOD's Professional Services to Fortune 100 companies, the Disability Employment Tracker, Corporate Leadership Council, and Campus to Careers program. Felicia is a subject matter expert on employment of people with disabilities, appeared WSJ, HR Magazine, Washington Post, addressed audiences at national and international conferences, corporate forums, universities, and has provided training to thousands of corporate, government and NGO employees. At NOD, Felicia has provided successful disability inclusion initiatives with Footlocker, Toyota, United Nations, Sutter Health, Stanley Black and Decker, Prudential, and more.



Kelly Offutt

Speech Language Pathologist, Ivymount Organization

Kelly is a practicing SLP at the Ivymount Organization, working predominantly with high school and transition aged students. She is particularly passionate about supporting language skills and transition using a strengths based approach that embraces neurodiversity. Kelly is studying to earn a Doctorate in Special Education & Disability Studies at the George Washington University, and has focused her research on the unique social experiences of adolescents with developmental disabilities.



Holly Opatick

Program Specialist, Project SEARCH / Cincinnati Children's Hospital

Holly Opatick is a Program Specialist with the National Project SEARCH Office. Holly serves Project SEARCH teams in 8 states and the District of Columbia. An accomplished Director, Educator and Counselor, her 20 years of experience covers a broad range of training and student service functions. As a graduate of Jesuit education, the chance to provide enrichment experiences that encourage young adults and professionals alike to excel academically, professionally and socially as well as develop an appreciation of diversity fulfills the fundamentals of her education which she has built her professional career upon...serving as a woman for others.





Craig Powell, CESP

Workforce Development Manager, Itineris

Craig Powell, CESP, has over 25 years of experience in both the for-profit and non-profit arenas with a passion for serving. With his varied experiences in Human Services, Craig joined Itineris in 2020 when hired to serve as the Workforce Manager. Itineris is a Baltimore area non-profit committed to employment first in serving adults on the autism spectrum. In his role as the Workforce Manager, Craig oversees Itineris' employment services program to

assist adults on the autism spectrum in connecting with meaningful employment via a customized employment development process.



Mat Rice

Public Policy Director, People On the Go Maryland

Mat Rice currently serves as the Public Policy Director at People On the Go Maryland. Mr. Rice was formerly the Public Policy Director and Project Lead for the Empowering Partners self-advocacy initiative at The Arc Maryland. He also served as the Public Policy Specialist for People On the Go. Mr. Rice has been instrumental in educating legislators on issues which impact the quality of life for people with disabilities in Maryland. As a leader in the

community, he served as the lead facilitator on the Equal Employment Coalition to help pass the Ken Capone Equal Employment Act.



Toby Rickard

Transition and Autism Specialist, Cognitopia

Toby Rickard is a community living, transition, and self-management consultant with Cognitopia, Autism Advocacy and Support Services, Inc. and Eugene 4J School District, where he has worked for over 20 years as a transition and autism expert.



Susie Rutkowski

Co-Founder and Program Specialist, Project SEARCH/Cincinnati Children's Hospital

Susie is the Co-Founder and a Program Specialist with Project SEARCH. She is a nationally recognized transition expert with specific experience in program development and employability curricula for young adults with disabilities. Susie has been instrumental in designing the Project SEARCH Employability Skills Curriculum, training modules and leading replication efforts for new Project SEARCH sites in the U.S. and other countries as well. With

her Project SEARCH colleagues and friends, Maryellen Daston and Erin Riehle, they wrote the book: High School Transitions That Work: Lessons Learned from Project SEARCH.



Jon Ryan

Associate Producer, National Geographic

Jon is a Producer with over a decade of experience in the media industry. He currently works for National Geographic. One of his proudest achievements was collaborating with local nonprofit SEEC to host a joint Mentorship Program between National Geographic managers and individuals SEEC supports to foster career growth and improve hiring practices.





Dr. Bradley L. Schlaggar

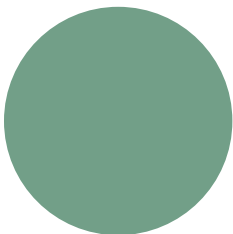
President and CEO, Kennedy Krieger Institute

Dr. Bradley L. Schlaggar is the President and CEO of Kennedy Krieger Institute, where he holds the Zanvyl Krieger Faculty Endowed Chair. He is also a Professor of Neurology and Pediatrics at Johns Hopkins University School of Medicine. Dr. Schlaggar co-directs the NICHD funded Intellectual & Developmental Disabilities Research Center at Kennedy Krieger Institute. He also directs the NINDS funded Child Neurologist Career Development Program, supporting the early career development of aspiring physician-scientists. He has received numerous awards for research, mentorship, clinical care, and community service, including the Philip R Dodge Young Investigator Award from the Child Neurology Society, the Humanitarian Award from the Tourette Association of America, the Norman Geschwind Award for Behavioral Neurology from the American Academy of Neurology, the E. Mead Johnson Award from the Society for Pediatric Research, and the Frank Hatch Award for Outstanding Community Service from the John Merck Foundation. In 2021, he was elected into the Association of American Physicians. Dr. Schlaggar's research efforts are directed at understanding the development of the brain's functional network architecture in typically and atypically developing children.



Jason Schriml

Vice President, Athlete Leadership, Special Olympics Maryland



Brilly Semanova

Advocate
STEERus



Nygil Sims

Kennedy Krieger Institute Employee

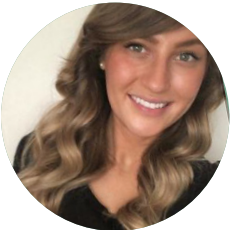
Nygil currently works at the International Center for Spinal Cord Injury at Kennedy Krieger Institute. Nygil is a graduate of Project SEARCH and has been working in his position for three years. Nygil states that his experiences through this job have been life changing. Nygil helps patients who are recovering from an injury or who are working hard to learn to move their body. Some of Nygil's major job responsibilities are helping the therapists transport patients onto the mats from wheelchairs. He also helps with cleaning the therapy rooms and supports other tasks the therapists may need. Nygil lives in his own apartment and enjoys having friends over and making them laugh. Nygil is extremely social and loves spending time with his friends and family. Nygil is originally from New York and has one amazing sister and three awesome brothers. He loves to have fun and make people laugh!





Tyler Shallue
CORE Foundations Community Member

After graduating from the Maryland School for the Blind in 2020, Tyler participated in Project SEARCH and enrolled in classes at Anne Arundel Community College. He began a 6-month job at Training and E-tracking Solutions and then worked as a COVID-19 Health Screener at Kennedy Krieger Institute. Currently, he is focusing on his coursework while also looking for job opportunities. In his free time, Tyler enjoys being able to work and interact with people who have similar interests and backgrounds. He acknowledges that sometimes it can be hard to know what to expect with certain aspects of a job due to his vision challenges. A skilled pianist with perfect pitch, Tyler recently played at Anne Arundel Community College to help promote the importance of the Library of Congress' braille music services across the United States.



Katelyn Szymanski, MSW, LMSW
Quality Assurance Associate, Itineris

Katelyn Szymanski, MSW, LMSW (she/her/hers) is a neurodivergent self-advocate with 8 years of experience working with neurodivergent communities. She is currently the Quality Assurance Associate for Itineris Baltimore, where she supports the agency with program compliance and staff training. She also has extensive experience conducting training seminars for families and other helping professionals in the community. Katelyn aims to use her personal and professional experiences to inspire others and support neurodiverse communities with moving at least one step closer to a more inclusive, accepting world.



Teresa Thomas, MA
Program Lead for Neurodiverse Talent Enablement, MITRE Corp.

Theresa Thomas is the MITRE Corporation's Program Lead for Neurodiverse Talent Enablement. Teresa has a long history of advocacy for neurodiverse populations. She is a parent of an adult on the autism spectrum and is active in the MITRE Corporation's Inclusion and Diversity programs. Teresa brought together an advisory council consisting of private organizations, universities, self-advocates, and federal agencies to develop and pilot the Neurodiverse Federal Workforce program. She also designed and now spearheads MITRE's internal neurodiversity internship program. Both programs focus on providing opportunities and support for neurodivergent individuals in cybersecurity and other technical roles.



Sydney Thompson
CORE Foundations Community Member

Sydney completed her school career as a Project SEARCH intern from August 2020 until June 2021. Upon graduation, she transitioned into CORE Foundations, where she participated in a hybrid model of services, which included virtual sessions and in-person services. During her in-person services, she started a consistent volunteer position through Meals on Wheels with her Community Development Services group. There, she worked on a variety of tasks and quickly became a valued volunteer, illustrated by being highlighted in their Summer 2022 Newsletter! After working as a volunteer for a year, she was offered a paid position in December. CORE Foundations staff now support Sydney through Follow-Along Job Supports. She continually demonstrates her excellent work ethic, willingness to try new tasks, and her natural ability to guide others when they need assistance. In her free time, Sydney loves walks, photography and all types of music. She also attends dance classes and participates in a bowling league through Special Olympics.





Pamela Toole

Lead Employer Outreach Consultant, SEEC

Pamela Toole leads SEEC's Employer Outreach Team, a pan-agency team dedicated to developing employment opportunities for people with disabilities, through partnership with local businesses, monitoring workforce trends and identifying industry needs. Pam's background includes recruitment and management, both in small local operations and in large national organizations. The breadth of her experience focused on adult learning and career training with a strong emphasis on marketing, communications and business development. Pam has expertise in building strong teams that deliver positive outcomes, with an eye on mentorship. Bringing the employer perspective to this role at SEEC is a strong job match!



Maureen van Stone, Esq.

Director, Maryland Center for Developmental Disabilities, Kennedy Krieger Institute

Maureen is the director of the Maryland Center for Developmental Disabilities (MCDD) at Kennedy Krieger Institute (Maryland's University Center for Excellence in Developmental Disabilities Education, Research, and Service) and the founder of Project HEAL (Health, Education, Advocacy, and Law). Project HEAL is Maryland's only comprehensive medical-legal partnership, which provides advocacy and civil legal services to children with disabilities who receive services at Kennedy Krieger. Maureen is an associate for the Department of Mental Health at the Johns Hopkins Bloomberg School of Public Health and affiliate faculty for the Wendy Klag Center for Autism and Developmental Disabilities.



Lindsay Wagner, MOT, OTR/L

Director of Neurodiversity and Community Inclusion, League School of Greater Boston

Lindsay Wagner, MOT, OTR/L is an occupational therapist who has been practicing in the field of autism for 16 years. She's currently the Director of Neurodiversity and Community Inclusion at the League School of Greater Boston. Since joining the League School in 2007, Lindsay has led the program's implementation of the SCERTS® Model, an educational framework that engages the involvement of the multidisciplinary team to coordinate programming targeting social, emotional and educational needs of each individual student. Lindsay holds a master's of Occupational Therapy degree from the University of Pittsburgh and is certified as an Autism Spectrum Disorder Clinical Specialist.



Chantelle Walker

CEO, REED Autism Services

Chantelle Walker is the CEO of New Jersey based REED Autism Services, a family of programs which provides support for individuals with autism so they can thrive. These programs include REED Academy, REED Next, Greens Do Good, and the REED Foundation for Autism. Chantelle's nonprofit career spans over 20 years in management, including roles in finance, operations, business development, fundraising, and marketing for organizations ranging from acute care hospitals to autism service providers. Chantelle is passionate about pursuing innovative solutions to address the complex challenges of a growing autism community. She currently co-hosts the podcast 'Changemakers in Autism', where she engages with innovators around the country on topics important to the autism community including affordable housing, advocacy, and workforce development.





Sara Weir

Senior Advisor, ABLEtoday

Sara Hart Weir is a national ABLE expert and disability activist. Weir is the former President & C.E.O. of the National Down Syndrome Society. During her tenure at NDSS, she led the passage of the Achieving a Better Life Experience (ABLE) Act. Sara is also a national leader in driving public-private partnerships to ensure people with disabilities have a fair shot at the American Dream. She drives solutions that give individuals with disabilities access to a better life - from growing workforce development and career opportunities, increasing access to quality, affordable housing, improving healthcare delivery systems and expanding inclusive education.



Alden Welles, LMSW

Freelance Neurodiversity Presenter/Instructor

Alden Welles is a Licensed Master Social Worker (LMSW) and neurodiversity self-advocate who focuses on embracing neurodiversity in mental health/human services settings, both regarding employees and clients. Alden was diagnosed with Asperger Syndrome at age 9 (though he no longer uses this term) and has been dedicated to disability rights ever since. He has presented to high school students, college students, and clinicians at agencies such as Future Centered Care and Cerebral; he has also worked as a Care Counselor at the latter organization.



Katherine Wisener

Senior Strategist, Office of the Director of National Intelligence

Katherine Wisener is a Senior Strategist for the National Counterproliferation and Biosecurity Center (NCBC) at the Office of the Director of National Intelligence (ODNI). Before joining NCBC, Katherine served as the Threat Opportunities Section Chief at the Cyber Threat Intelligence Integration Center, and as a Senior Cyber Operations Planner at the Cybersecurity and Infrastructure Security Agency. Katherine earned a B.A. in Theatre and Dance from James Madison University and an M.A. in International Affairs from The Elliott School of International Affairs at The George Washington University.



Woody Woodroof

Founder and Executive Director, Red Wiggler Community Farm

Woody Woodroof founded Red Wiggler Community Farm in 1996 to create meaningful jobs for adults with developmental disabilities growing and selling healthy food. The CSA is the second longest running CSA in Maryland with 50% of the harvest being distributed to Food Banks. Today, Woody works to ensure Red Wiggler's impact by supporting staff in mission-driven programming, securing funding and working with Red Wiggler's Board of Directors on long-term sustainability of the organization.





Tracy Wright

Director of Training, People On the Go Maryland

Tracy Wright currently serves as the Director of Training at People On the Go. Ms. Wright formerly served as the voting advocate for Disability Rights Maryland (DRM) and as a lead trainer for People On the Go. After graduating from Maryland Partners in Policymaking, Ms. Wright worked at The Arc Maryland for over 15 years. During her tenure, Ms. Wright designed and presented trainings on self-determination, self-advocacy, disability rights, risk taking, and quality of life for people with I/DD, and the professionals who support them. She mentored individuals residing in state residential centers and provided education on community living.



Devin Wylie

Program Coordinator, People On the Go Maryland

Devin Wylie is the Program Coordinator for People On the Go. Devin mentors and supports People On the Go officers and members. Devin is committed to improving the quality of life for those living with intellectual and developmental disabilities. She previously served as a Direct Support Professional and Community First Choice Case Manager, where she was able to provide resources to ensure that individuals with disabilities received support and services within their community. Devin is committed to using a person-centered approach to empower individuals with disabilities to live meaningful lives.



Gabrielle Zwi

Social Media Consultant, Care Farming Network

Gabrielle is a community organizer, educator, and musician based in Rockville, Maryland. As Social Media Consultant for the Care Farming Network, Gabrielle raises nation-wide awareness of Care Farming and its benefits. Gabrielle advises DC Teens Action, and serves as a Commissioner on the Human Rights Commission of the City of Rockville, and as a Public Representative on Montgomery County's Committee Against Hate/Violence. They are a Jewish Brazilian-American and a member of the LGBTQ+ community, and they have Autism Spectrum Disorder along with other disabilities that have played an integral role in their creative, advocacy, and non-profit work.

