

Maryland Center for Developmental Disabilities



Maryland Center for Developmental Disabilities
at Kennedy Krieger Institute



PROPOSED:
Maryland Data Collaborative
October 2013



Kennedy Krieger Institute

What is the MD Data Collaborative?

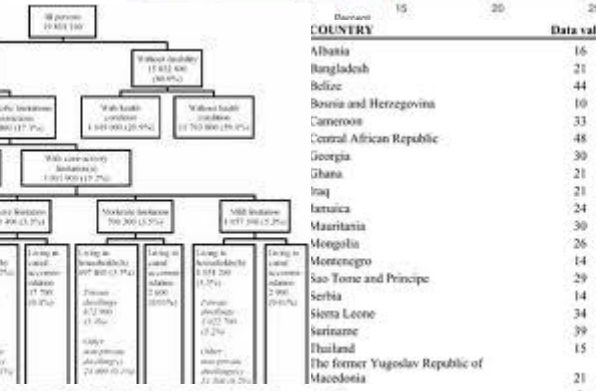
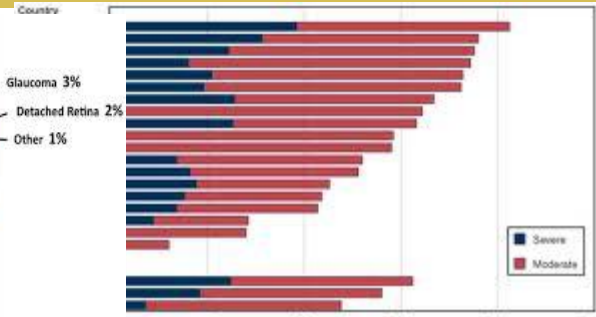
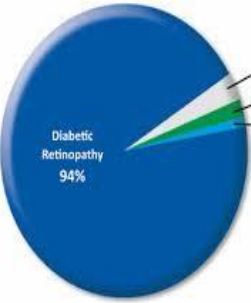
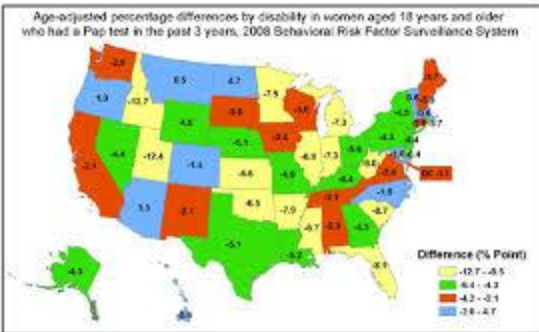
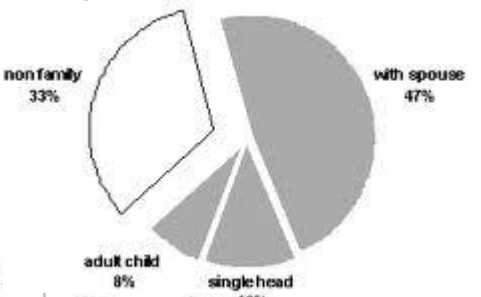


Figure 5. Americans with MRDD: Where They Live Disability



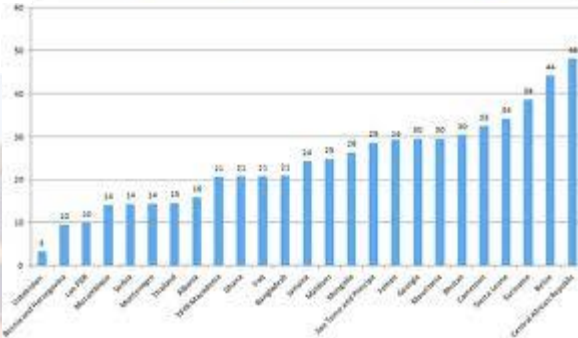
COUNTRY	Data value	Year	Source
Albania	16	2005	MICS
Bangladesh	21	2006	MICS
Belize	44	2006	MICS
Bosnia and Herzegovina	10	2006	MICS
Cameroon	33	2006	MICS
Central African Republic	48	2006	MICS
Georgia	30	2005	MICS
Ghana	21	2006	MICS
Iraq	21	2006	MICS
Latvia	24	2005	MICS
Mauritania	30	2007	MICS
Montenegro	26	2005	MICS
Mozenegro	14	2005-2006	MICS
Sao Tome and Principe	29	2006	MICS
Serbia	14	2005-2006	MICS
Slova Leone	34	2005	MICS
SriLanka	39	2006	MICS
Thailand	15	2005-2006	MICS
The former Yugoslav Republic of Macedonia	21	2005	MICS
	1	2006	MICS

8 million households
Kuwa (1999)

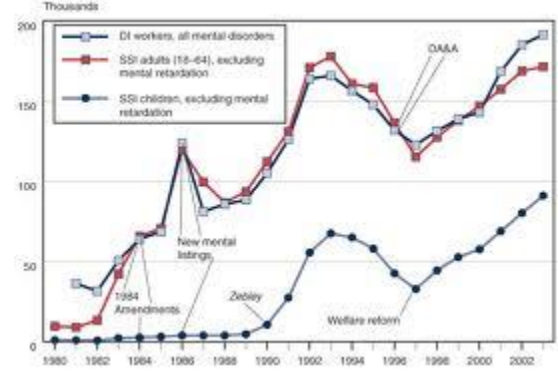
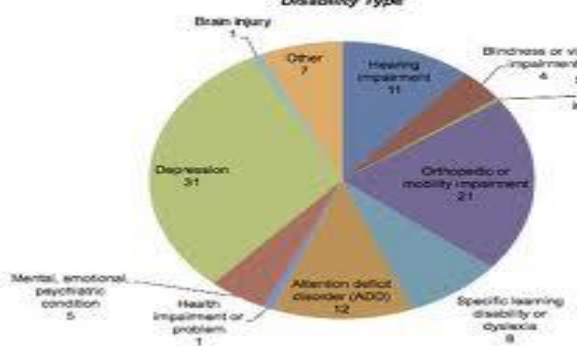
Developmental disabilities in Children Aged 3-17 Years*

- any developmental disability 13.87%
- learning disability 7.66%
- DHD 6.69%

percentage of U.S. children in this age group: 92.6%



Graduate Students with Disabilities in Social/Behavioral Sciences



HDA
Health & Disability Advocates

A black and white photograph showing several hands of different skin tones stacked on top of each other, symbolizing teamwork and collaboration.

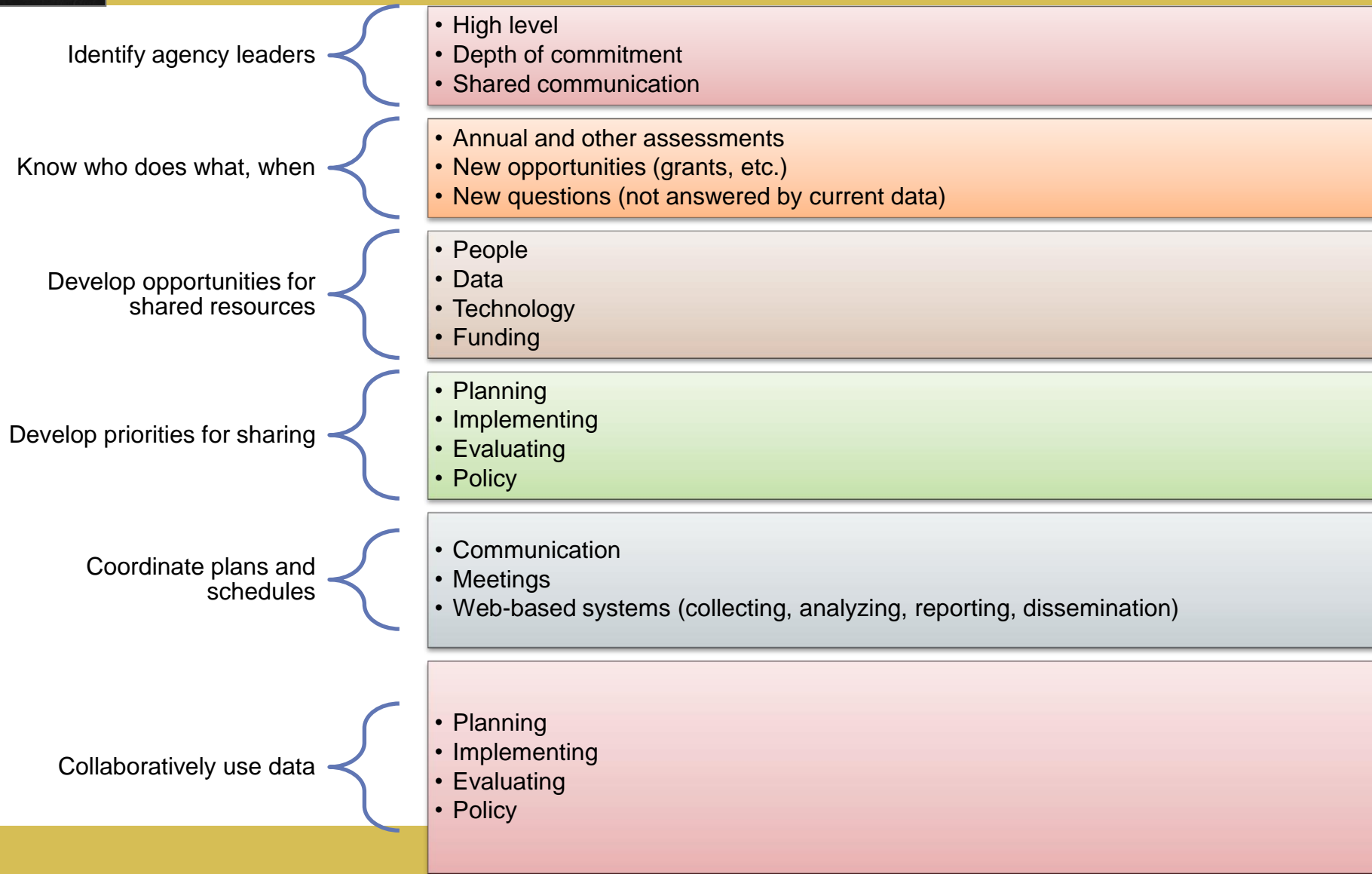
Why a data collaborative?

- Develop a collection of data/information for participating partners to use in various aspects of their work: MD stakeholder information, regulatory needs assessments, program evaluation, training, grant writing, publications, and etc. (ensuring data security, use, retention and management)





Goals of the Data Collaborative





Interested Partners

- DHMH, Office for Genetics and People with Special Health Care Needs (MD Title V)
- Parents' Place of Maryland (PPMD)
- Maryland Center for Developmental Disabilities (MCDD)
- Maryland State Department of Education (MSDE)
- DHMH, Developmental Disabilities Administration (DDA)
- Maryland Department of Disabilities (MD DoD)
- Maryland Developmental Disabilities Council (DD Council)
- Johns Hopkins Bloomberg School of Public Health (JHSPH)





Where we are now?

Next steps.....

- Establish a data collaborative calendar
- Create a central repository of currently used data to see what is out there, what data sources we commonly use
- Conduct a self-assessment
- Review best practices
- Develop a structure for the collaborative





Questions?

Contact Information:

Christopher Smith, PhD
Jacqueline D. Stone, PhD, PT
Maryland Center for Developmental Disabilities at
Kennedy Krieger Institute

Telephone:

443-923-9555

Email:

smithchr@kennedykrieger.org

stone@kennedykrieger.org

Thank you



Kennedy Krieger Institute

www.kennedykrieger.org