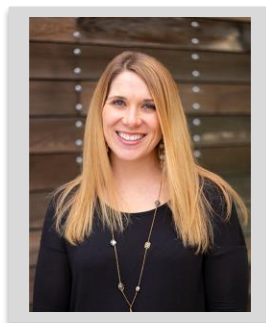


Kennedy Krieger Institute

A “Good Life” for the Whole Family: Supporting People in the Context of their Family



Jenny Turner, MSW, LCSW, is a senior research associate at the University of Missouri, Kansas City- Institute for Human Development, UCEDD. She is the co-lead for the National Community of Practice for Supporting Families. She serves as the project director for the Missouri Living Well project and is a member of the LifeCourse Nexus team. [Click](#) to read the presenter's full bio.

Date: Wednesday, June 9, 2021

Time: 9 a.m. to 12:15 p.m.

Where: Live Interactive Webinar

Registered participants will receive an e-mail with instructions on how to join the session.

Objectives: Participants will be able to:

1. Describe the impact of family and community context in supporting individuals with intellectual and developmental disabilities.
2. Identify strategies for supporting individuals and families to understand and maximize the reciprocal roles of all family members.
3. Utilize the Charting the LifeCourse framework and tools to support individuals and families in planning, problem-solving, and decision making.

All people exist within the context of their family and community, with reciprocal roles that adjust across the life span and the family life cycle. Person- and family-centered supports cannot be mutually exclusive; rather, supports must consider the whole person and the whole family. This session will explore how using the Charting the LifeCourse framework can help individuals to achieve self-determination, interdependence, integration, productivity, integration and inclusion in all facets of community life AND how families can be supported in ways that maximize their capacity, strengths, and unique abilities to best nurture, love, and support all individual members to achieve their life goals.

Instructional Level: Intermediate

Who Should Attend? Psychologists, Social workers, Counselors, Educators, Faith Leaders, Parents and Caregivers, Nurses, Clinical and Medical Staff, Direct Support Professionals and other Community Service Providers, Speech/Physical/Occupational therapists, Students/Trainees

To Register, [Click](#) or Call 443-923-9555

3.0 Continuing Education Hours

Maryland Center for Developmental Disabilities at Kennedy Krieger Institute is authorized by the Board of Social Work Examiners in Maryland to sponsor social work continuing education programs and maintains full responsibility for this program. Kennedy Krieger Institute is approved by the American Psychological Association to sponsor continuing education for psychologists. Kennedy Krieger Institute maintains responsibility for this program and its content. 3.0 Continuing Education Credits (Category 1) will be granted to social workers and licensed psychologists. A Certificate of Attendance will be made available for all other disciplines. No conflicts have been identified (this includes commercial support and research grants/funding). The registration fees include: \$55 registration fee will be charged for professionals, \$15 registration for parents/caregivers/individuals with disabilities, and \$10 for students/trainees workshop registrations.

For more information on our Summer Learning Series or to request accommodations or assistance for individuals with disabilities, please contact us by phone at 443-923-9555, email Training.MCDD@KennedyKrieger.org, or visit MCDD.KennedyKrieger.org. Requests should be made as soon as possible but at least seven days prior to the scheduled meeting.



Maryland Center for Developmental Disabilities
at Kennedy Krieger Institute
Building Partnerships. Changing Lives.