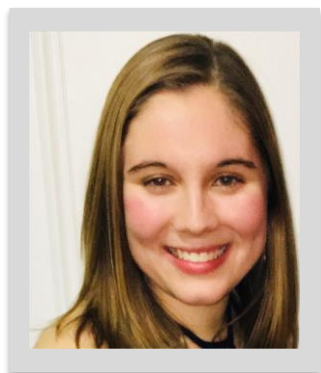


Kennedy Krieger Institute

Best Practices and Adaptations for Providing Telehealth Services for Children with Autism Spectrum Disorder and Intellectual and Developmental Disabilities



Stephanie Miodus, MA, MEd, earned her MA in Forensic Psychology from John Jay College of Criminal Justice, and MEd in School Psychology from Temple University. She works with students with autism and I/DD, and is currently pursuing her doctoral degree in School Psychology at Temple University. [Click](#) to read presenter's full bio.

Date: Tuesday, June 22, 2021

Time: 9 a.m. to 12:15 p.m.

Where: Live Interactive Webinar

Registered participants will receive an e-mail with instructions on how to join the session.

Objectives: Participants will be able to

1. Identify benefits and challenges of providing telehealth services to children with ASD and I/DD.
2. Discuss effective strategies and best practices for supporting children with ASD and I/DD and their families when delivering services via telehealth.
3. Apply adaptations for individual and group service delivery over telehealth when working with children with ASD and I/DD.

Telehealth has risen in popularity and is expected to continue growing as a service delivery option to increase access to mental health services. General guidelines and recommendations for providing telehealth services exist, but special considerations and adaptations are needed when working with children with autism spectrum disorder (ASD) and intellectual and developmental disabilities (I/DD). This workshop will help providers and families increase their knowledge of best practices and adaptations for telehealth services, which they can apply when supporting children with ASD and I/DD.

Instructional Level: Introductory

Who Should Attend? Counselors, Educators, Parents and Caregivers, Psychologists, Social workers, Nurses, Medical and Clinical Staff, Support Staff and other Community Service Providers, Speech/Physical/Occupational therapists, Students/Trainees

To Register, [Click](#) or Call 443-923-9555

3.0 Continuing Education Hours

Maryland Center for Developmental Disabilities at Kennedy Krieger Institute is authorized by the Board of Social Work Examiners in Maryland to sponsor social work continuing education programs and maintains full responsibility for this program. Kennedy Krieger Institute is approved by the American Psychological Association to sponsor continuing education for psychologists. Kennedy Krieger Institute maintains responsibility for this program and its content. 3.0 Continuing Education Credits (Category 1) will be granted to social workers and licensed psychologists. A Certificate of Attendance will be made available for all other disciplines. No conflicts have been identified (this includes commercial support and research grants/funding). The registration fees include: \$55 registration fee will be charged for professionals, \$15 registration for parents/caregivers/individuals with disabilities, and \$10 for students/trainees workshop registrations.

For more information on our Summer Learning Series or to request accommodation or assistance for individuals with disabilities, please contact us by phone at 443-923-9555, email Training.MCDD@KennedyKrieger.org, or visit MCDD.KennedyKrieger.org. Requests should be made as soon as possible but at least 7 days prior to the scheduled meeting.



Maryland Center for Developmental Disabilities
at Kennedy Krieger Institute
Building Partnerships. Changing Lives.