

Clinical Connection

News, Updates and Support for Healthcare Professionals



Kennedy Krieger Institute

REHABILITATION • DEVELOPMENTAL MEDICINE • BEHAVIORAL THERAPIES



Dear Friend,

I hope this letter finds you well. We who work in the healthcare field have faced challenges the likes of which we've not previously encountered in our lifespans. You've probably worked harder—and differently, with each week bringing you and your colleagues new challenges. But we've also learned, collectively, that even in the most

trying times, we can achieve incredible things—especially when we work together (even if it's over Zoom).

At Kennedy Krieger Institute, we responded to the pandemic with one singular focus: to continue providing excellent care and education to our patients and students, and their families. We expanded our telehealth services to more than 5,000 appointments and sessions a week while continuing to serve patients in need of on-site care—in our inpatient rehabilitation hospital and outpatient centers. We've maintained our collaborations with committed professionals like you. And this past spring, we began welcoming our students back into our classrooms, with appropriate protocols, of course.

On three Sundays in May and June, Kennedy Krieger offered COVID-19 vaccinations to individuals with intellectual and other disabilities and their caregivers. Dozens of Institute staff members volunteered their time to ensure the success of these drive-through vaccination clinics. Because of their disabilities, many of the individuals we vaccinated weren't able to be vaccinated in the community. Their and their family members' gratitude for our efforts was heartfelt and apparent. Watching our team in action, I was again reminded of how honored I am to be a part of this amazing team.

The stories in this edition of *Potential* magazine are examples of that teamwork. Despite all the challenges presented by the pandemic, the patients, students, families, teachers, clinicians and others featured in these stories were able to achieve some truly remarkable things.

Thank you for all you do for your patients and their families. We could not do what we do without you.

Stay safe and be well,

A handwritten signature in black ink that reads "Brad".

Bradley L. Schlaggar, MD, PhD
President and CEO

INSIDE THIS ISSUE:

- Kennedy Krieger Opens New High-Tech Evaluation Unit for Epilepsy Treatment
- New Spinal Cord Injury Gym Location Opens
- EEG and Sleep Study Capabilities at Kennedy Krieger

REFERRING YOUR PATIENTS

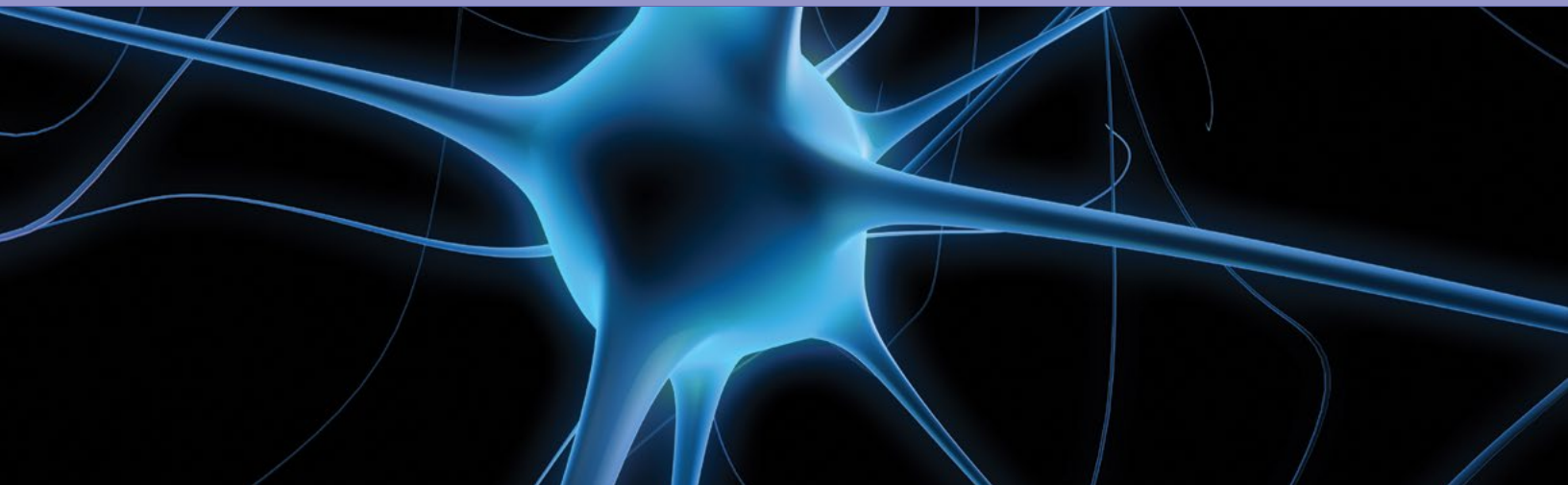
To support the needs of physicians and other healthcare professionals, our Patient Access team is available to provide information on appropriate clinical programs, handle referrals, obtain consultations with Institute specialists, and schedule both telehealth and on-site, in-person appointments for patients and families.

Call **443-923-9403** to reach our Physician Referral Line, or visit **[KennedyKrieger.org/Referrals](https://www.kennedykrieger.org/Referrals)** for information and resources for physicians and healthcare professionals.

For general information, visit **[KennedyKrieger.org](https://www.kennedykrieger.org)** or call **1-888-554-2080**.

OUR CULTURE OF CARE

Kennedy Krieger Institute recognizes and respects the rights of employees, trainees, and patients and students, and their families. At Kennedy Krieger, we ground our care, services, training and research in treating others with respect and civility. We respect the cultural identity of every person. Kennedy Krieger does not discriminate against people based on, but not limited to, perceived or actual race, color, ethnicity, national origin, age, language spoken, accent, marital status, veteran or military status, immigration status, disability, religion, pregnancy status, sex, sexual orientation, or gender identity or expression. We strive for equitable care for all individuals for whom we provide services, training, education and research participation. We encourage employees, trainees, and patients and students, and their families, to become active partners in the services provided by asking questions, seeking resources and advocating for their needs. © 2021 Kennedy Krieger Institute 7/2021



Kennedy Krieger Opens New High-Tech Evaluation Unit for Epilepsy Treatment

We're excited to announce that Kennedy Krieger Institute's Epilepsy Monitoring Unit (EMU) opens this summer. The EMU will evaluate children diagnosed with epilepsy, and children suspected of experiencing seizures.

Evaluations are conducted by continuous monitoring, with both electroencephalogram (EEG) testing and video/audio recording. Each of the rooms in the EMU is fully equipped with state-of-the-art EEG equipment, video monitors and intercoms to allow for immediate communication with the EMU's technologists and nurses.

With the EMU, neurologists are able to monitor a child via EEG and video/audio recording for several days at a time. This greatly increases the chance that a spell will be recorded, as the EEG will record the brain's electrical activity while a spell is actually occurring. That allows our neurologists to make a strong conclusion about whether a patient is having seizures—and what type of seizures they are. In comparison, a conventional EEG lasts between 45 minutes and a few hours, which is usually only long enough to capture snapshots of electrical activity. That's helpful information, but not as helpful as capturing an actual spell.

Our staff and faculty members' unique set of expertise, paired with our world-class technology, allow for the highest level of epilepsy care, including diagnosis and symptom management for children with developmental, behavioral and communication challenges.

The most common reasons to refer a child for evaluation to Kennedy Krieger's EMU are:

- To record an episode or episodes, to determine whether a seizure disorder is present
- To record brain waves (and often seizures) in someone with epilepsy, to enhance understanding and guide treatment

Kennedy Krieger's interdisciplinary EMU team includes:

- Board-certified neurologists with additional board certification in epilepsy or neurophysiology
- Pediatric hospitalist
- Registered EEG technologists
- Pediatrics, neurology, and physical medicine and rehabilitation residents
- Nurse practitioner
- Nurses
- Social workers
- Child life specialists
- Psychiatrists
- Behavioral psychologists
- Neuropsychologists

To learn more or to make a referral, call **443-923-9400** or email: **EMUReferrals@KennedyKrieger.org**



New Spinal Cord Injury Gym Location Opens

Last summer, Kennedy Krieger Institute opened the second location of its innovative International Center for Spinal Cord Injury, building upon a 15-year legacy of providing “Hope Through Motion” for adults and children with spinal cord injuries. This satellite location, located in Fulton, Maryland, is convenient for those traveling from the Greater Baltimore, Northern Virginia, Annapolis and Washington, D.C., areas. The 9,500-square-foot facility offers the same comprehensive, one-of-a-kind medical and rehabilitative approach as does the center’s original location in central Baltimore, with the latest high-tech rehabilitation equipment and advanced robotic technology designed to improve functioning for those with spinal cord injuries and disorders.

Additional highlights include a wellness gym, adult and pediatric therapy spaces, aquatic therapy-based gait training, robotic therapy equipment, dual ground-level entrances, and space for future expansion.

Visit [KennedyKrieger.org/ICSCI2](https://www.kennedykrieger.org/ICSCI2) to take a virtual tour of the new location. To make a referral, call **888-923-9222**.

EEG and Sleep Study Capabilities at Kennedy Krieger

At Kennedy Krieger Institute, we offer a wide array of electroencephalogram (EEG) services in our Clinical Neurophysiology Clinic and Laboratory, including routine, extended and overnight EEG recording. We are one of only a few centers in the region offering outpatient overnight video EEGs, sleep studies (polysomnograms, or PSGs) with video EEGs, and multiple sleep latency tests (MSLTs).

Our technologists have extensive experience working with children with disabilities, and take pride in working with families to ensure each study is recorded properly. As a result, we have a high rate of success, even with children with behavioral challenges.

To refer a patient to our Clinical Neurophysiology Clinic and Laboratory or for a sleep study, please contact Pat Rowe at Rowe@KennedyKrieger.org or **443-923-9150**.





Kennedy Krieger Institute

707 North Broadway
Baltimore, Maryland 21205

NON-PROFIT
U.S. POSTAGE
PAID
PERMIT #7157
BALTIMORE MD

PATIENT CARE PROGRAMS & SERVICES

Specialty Pediatric Hospital

Epilepsy Monitoring Unit
Feeding Disorders
Neurobehavioral Unit (NBU)
Rehabilitation Unit—brain injury, complex medical, pain management, postorthopedic surgery and spinal cord injury

Outpatient Centers, Programs and Services

International Adoption Clinic
Aquatic Therapy Program
Assistive Technology Clinic
Ataxia and Cerebellar Disorders Clinic
Audiology Clinic
Center for Autism and Related Disorders
Barth Syndrome Clinic
Behavior Management Clinic
Bone Disorders Program
Brachial Plexus Clinic
Center for Brain Injury Recovery
Phelps Center for Cerebral Palsy and Neurodevelopmental Medicine
Child and Family Support Center
Child and Family Therapy Clinic
Community Rehabilitation Program
Concussion Clinic
Constraint Induced and Bimanual Therapy Program
Pediatric Post-COVID-19 Rehabilitation Clinic
Cranial Cervical Clinic
Deafness-Related Evaluations Clinic
Center for Development and Learning
Pediatric Developmental Disabilities Clinic
Down Syndrome Clinic and Research Center
Epilepsy Clinic
Pediatric Feeding Disorders Program
Focused Interdisciplinary Therapy Program
Fragile X Clinic
Healthy Lifestyles Therapy Program
Infant Neurodevelopment Center
Moser Center for Leukodystrophies

Limb Differences Clinic
Military Behavioral Health Services
Center for Genetic Muscle Disorders
Neurobehavioral Unit Outpatient Clinic
Neurology and Neurogenetics Clinic
Clinical Neurophysiology Clinic and Laboratory
Neuropsychiatry in Epilepsy Program
Neuropsychology Department Outpatient Clinics
Specialized Transition Program, a Neurorehabilitation Day Hospital
Nutrition Clinic
Occupational Therapy Clinic
Orthopedic Clinic
Osteogenesis Imperfecta Clinic
Pediatric Pain Rehabilitation Program
Physical Therapy Clinic
Pediatric Postural Orthostatic Tachycardia Syndrome (POTS) Clinic
Psychiatric Mental Health Program
Pediatric Psychology Consultation Program
Rehabilitation Clinic
Seating Clinic
Sickle Cell Neurodevelopmental Clinic
Sleep Disorders Clinic and Lab
Speech and Language Outpatient Clinic
Philip A. Keelty Center for Spina Bifida and Related Conditions
International Center for Spinal Cord Injury
Hunter Nelson Sturge-Weber Syndrome Center
Tourette Syndrome Center of Excellence at Kennedy Krieger Institute and Johns Hopkins Medicine
Clinic for Transgender and Nonbinary Youth
Center for Child and Family Traumatic Stress
Tuberous Sclerosis Clinic
Weight Management Program

Continuums of Care

Continuums allow patients to be seen through all stages of care, including in 24-hour inpatient programs, day treatment, home- and community-based services, and outpatient programs. They include **Pediatric Feeding Disorders, Neurobehavioral Disorders and Pediatric Rehabilitation (brain injury, complex medical, pain management, postorthopedic surgery and spinal cord injury).**

For a complete list of all diagnoses, disorders, programs and services, visit [KennedyKrieger.org/PatientCare](https://www.kennedykrieger.org/PatientCare) or call **888-554-2080**. TTY users, please contact us at **443-923-2645**, or dial **711** to make a Maryland Relay call.