

# Clinical Connection

News, Updates and Support for Healthcare Professionals



Kennedy Krieger Institute  
UNLOCKING POTENTIAL

REHABILITATION • DEVELOPMENTAL MEDICINE • BEHAVIORAL THERAPIES



Dear colleagues,

I'm pleased to send you this complimentary copy of *Clinical Connection* along with *Potential* magazine. *Clinical Connection* is just one way we inspire important communication between the Kennedy Krieger Institute professional staff and you. Communication with each other, on

behalf of any shared patients we may have, is critical to our mutual success in helping patients recover and thrive. Our aim is to provide you with up-to-date information about the latest Kennedy Krieger programs, clinics, providers and treatment approaches, as well as timely medical and clinical news.

*Potential* magazine is attached to this newsletter and features stories about children, teens and young adults, their families, and the many professionals at Kennedy Krieger and beyond who work together to improve the trajectory of patients' lives. Please consider placing the magazine in your waiting area for your staff members and patients to enjoy.

Our mission is to improve the lives of individuals with brain, nervous system and neuromuscular disorders, diseases and injuries. We are grateful for the trust you put in us when you refer patients to us. Our goal is to partner with you for their very best outcomes.

We want to hear from you! If you have questions, would like to refer a patient or would like extra copies of these publications, please send an email to [ReferAPatient@KennedyKrieger.org](mailto:ReferAPatient@KennedyKrieger.org) or call our Physician Referral Line at **443-923-9403**. Please email me at [CEO@KennedyKrieger.org](mailto:CEO@KennedyKrieger.org) should you wish to share any comments with me.

Warm regards,

A handwritten signature in black ink that reads "Brad".

Bradley L. Schlaggar, MD, PhD  
President and CEO

## INSIDE THIS ISSUE:

- New Clinical Programs for Neurological Disorders and Injuries
- Program Spotlight: Infant Neurodevelopment Center
- We're Growing and Hiring

## REFERRING YOUR PATIENTS

To support the needs of physicians and healthcare professionals, our care management team is available to provide information on appropriate clinical programs, handle referrals, obtain consultations with Institute specialists, and schedule appointments for patients and families.

Call **443-923-9403** to reach our Physician Referral Line, or visit [KennedyKrieger.org/Referrals](http://KennedyKrieger.org/Referrals) for information and resources for physicians and healthcare professionals.

For general information, visit [KennedyKrieger.org](http://KennedyKrieger.org) or call **1-888-554-2080**.

## OUR CULTURE OF CARE

Kennedy Krieger Institute recognizes and respects the rights of patients and their families and treats them with courtesy and dignity. Kennedy Krieger Institute provides care that preserves cultural, psychosocial, spiritual and personal values, beliefs and preferences. Care is free from discrimination based on age, race, ethnicity, religion, culture, language, physical or mental disability, socioeconomic status, sex, sexual orientation, and gender identity or expression, including transgender. We encourage patients and families to become active partners in their care by asking questions, seeking resources and advocating for the services and support they need. © 2019 Kennedy Krieger Institute 11/2019

## New Clinical Programs for Neurological Disorders and Injuries

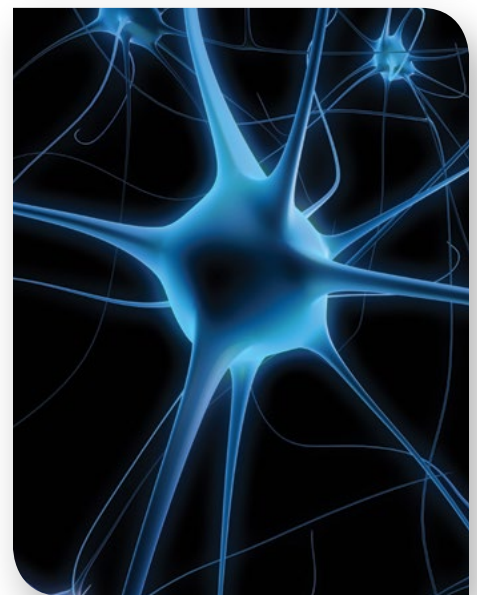
Kennedy Krieger Institute is excited to announce three new clinical programs designed to meet the needs of children with neurological disorders and injuries, and their families. They are:

**Dysautonomia Clinic:** This clinic provides expert diagnostic services and treatment for children and adolescents with dysautonomia and associated disorders, including postural orthostatic tachycardia syndrome (POTS). Treatment often includes both pharmacological and nonpharmacological interventions. Early intervention with physical and occupational therapy, as well as behavioral psychology for managing and coping with the disorder, is also key for improved outcomes.

**Ataxia and Cerebellar Disorders Clinic:** This clinic provides expert diagnostic services and treatment for ataxia and cerebellar disorders for children under age 16. The clinic's interdisciplinary team treats children who are newly diagnosed, those who have had the disorder for a period of time, and those who are suspected of having the disorder and need an accurate diagnosis.

**Epilepsy Clinic:** In this clinic, a team of specialists provides individualized care—through evaluation, testing, treatment and counseling—for children with epilepsy and seizures. We offer the most advanced neuroimaging testing available as well as electroencephalogram (EEG) testing and magnetic resonance imaging (MRI). We are one of the few centers in the region that provide outpatient overnight video EEGs as well as combined sleep studies (PSG) with video EEG. Our technologists have extensive experience working with children with disabilities and take pride in working with families to ensure studies are recorded properly.

To learn more or to make an appointment at any of these clinics, or with any other Kennedy Krieger clinical program, send an email to [FindASpecialist@KennedyKrieger.org](mailto:FindASpecialist@KennedyKrieger.org) or call 443-923-9403.



## We're Growing and Hiring

Kennedy Krieger Institute is a national leader in developmental disabilities and pediatric rehabilitation and transforms the lives of children with disorders of the brain through groundbreaking research, innovative treatments and life-changing education. We are committed to workplace diversity, and as specialty providers, we believe that a diverse workforce will help provide quality healthcare for our patients. The Institute is growing and expanding its services, and to that end, we are recruiting high-quality,

## Program Spotlight: Infant Neurodevelopment Center

The Infant Neurodevelopment Center at Kennedy Krieger Institute evaluates and treats infants with a wide variety of medical issues that could put them at risk for developmental delays. The center's mission is to provide early identification and intervention to reduce an infant's risk for future challenges with language, hearing, sight, feeding, behavior, motor and cognitive development.

The center's interdisciplinary team includes medical providers, neuropsychologists, physical and occupational therapists, and a social worker. Not every infant seen at the center is evaluated by all team members—it depends on each infant's needs. The center evaluates and follows infants identified in utero, at birth or shortly after birth as having one or more conditions putting them at risk for developmental delays.

These conditions include:

- Having experienced a brain injury, such as a neonatal brain hemorrhage or stroke
- Having experienced oxygen deprivation to the brain
- Prenatal conditions requiring surgical intervention
- Having experienced neurologic complications in infancy
- Genetic disorders with neurological implications
- Microcephaly (or being at risk for microcephaly)
- Low birth weight
- Having been born prematurely

diverse candidates for the following key positions:

- Physician, Center for Development and Learning
- Faculty, Director of Communication Sciences and Disorders
- Medical Director, Pediatric Feeding Disorders Program
- Medical Director, Clinical Trials Unit

Qualified applicants for these positions will be eligible for faculty appointment at the Johns Hopkins University School of Medicine as instructors, assistants, or associate or full professors, depending on qualifications.



The team uses evidence-based early diagnostic tools, including:

- General Movements Assessment
- Hammersmith Infant Neurological Examination
- The Capute Scales

The center is the only healthcare site in Maryland participating in the Cerebral Palsy Foundation's Early Detection and Intervention Network. This initiative is bringing the average age of cerebral palsy diagnosis down from 2 years old to 6 to 12 months old, and in some cases, even before a baby leaves the hospital. This allows babies to receive early interventions that will positively impact their outcomes.

Visit [KennedyKrieger.org/InfantCenter](https://www.kennedykrieger.org/InfantCenter) to learn more about our treatment approach and to watch a video about the program. Email the center's clinic coordinator at [INC@KennedyKrieger.org](mailto:INC@KennedyKrieger.org) to make a referral.

We offer competitive salaries and full benefits, including partial college tuition remission for faculty member dependents (at any college) and tuition remission for faculty members, spouses and dependents for coursework performed at The Johns Hopkins University and the university's Peabody Institute.

Visit [KennedyKrieger.org/Careers](https://www.kennedykrieger.org/Careers) for more details about these positions and their qualifications. Email a cover letter and CV to Tina Schmitt, director of talent acquisition, at [Schmitt@KennedyKrieger.org](mailto:Schmitt@KennedyKrieger.org) to apply.



Kennedy Krieger Institute

707 North Broadway  
Baltimore, Maryland 21205

NON-PROFIT  
U.S. POSTAGE  
**PAID**  
PERMIT #7157  
BALTIMORE MD

## PATIENT CARE PROGRAMS & SERVICES

### Specialty Pediatric Hospital

Feeding Disorders  
Neurobehavioral Unit (NBU)  
Rehabilitation Unit—brain injury, complex medical,  
pain management, post-orthopedic surgery and  
spinal cord injury

### Outpatient Centers, Programs and Services

International Adoption Clinic  
Aquatic Therapy Program  
Assistive Technology Clinic  
Ataxia and Cerebellar Disorders Clinic  
Audiology Clinic  
Center for Autism and Related Disorders  
Barth Syndrome Clinic  
Behavior Management Clinic  
Bone Disorders Program  
Brachial Plexus Clinic  
Center for Brain Injury Recovery  
Phelps Center for Cerebral Palsy and  
Neurodevelopmental Medicine  
Child and Family Support Center  
Child and Family Therapy Clinic  
Community Rehabilitation Program  
Concussion Clinic  
Constraint-Induced and Bimanual Therapy Program  
Cranial Cervical Clinic  
Deafness-Related Evaluations Clinic  
Center for Development and Learning  
Pediatric Developmental Disabilities Clinic  
Down Syndrome Clinic and Research Center  
Dysautonomia Clinic  
Epilepsy Clinic  
Pediatric Feeding Disorders Program  
Focused Interdisciplinary Therapy Program  
Fragile X Clinic  
Healthy Lifestyles Therapy Program  
Infant Neurodevelopment Center  
Moser Center for Leukodystrophies

Limb Differences Clinic  
Military Behavioral Health Services  
Center for Genetic Muscle Disorders  
Neurobehavioral Unit Outpatient Program  
Neurology and Neurogenetics Clinic  
Clinical Neurophysiology Clinic and Laboratory  
Neuropsychiatry in Epilepsy Program  
Neuropsychology Outpatient Clinics  
Specialized Transition Program Neurorehabilitation  
Day Hospital  
Nutrition Clinic  
Occupational Therapy Clinic  
Orthopedic Clinic  
Osteogenesis Imperfecta Clinic  
Pediatric Pain Rehabilitation Program  
Physical Therapy Clinic  
Psychiatric Mental Health Program  
Pediatric Psychology Program  
Rehabilitation Clinic  
Seating Clinic  
Sickle Cell Neurodevelopmental Clinic  
Sleep Disorders Clinic and Laboratory  
Speech and Language Clinic  
Philip A. Keelty Center for Spina Bifida  
and Related Conditions  
International Center for Spinal Cord Injury  
Hunter Nelson Sturge-Weber Center  
Center for Child and Family Traumatic Stress  
Tuberous Sclerosis Clinic  
Weight Management Program

### Continuums of Care

Continuums allow patients to be seen through all stages of care, including in 24-hour inpatient programs, day treatment, home- and community-based services, and outpatient programs. They include **Pediatric Feeding Disorders**, **Neurobehavioral Disorders** and **Pediatric Rehabilitation (brain injury, complex medical, pain management, post-orthopedic surgery and spinal cord injury)**.

For a complete list of all diagnoses, disorders, programs and services, visit [KennedyKrieger.org/PatientCare](http://KennedyKrieger.org/PatientCare) or call **888-554-2080**. TTY users, please contact us at **443-923-2645**, or dial **711** to make a Maryland Relay call.