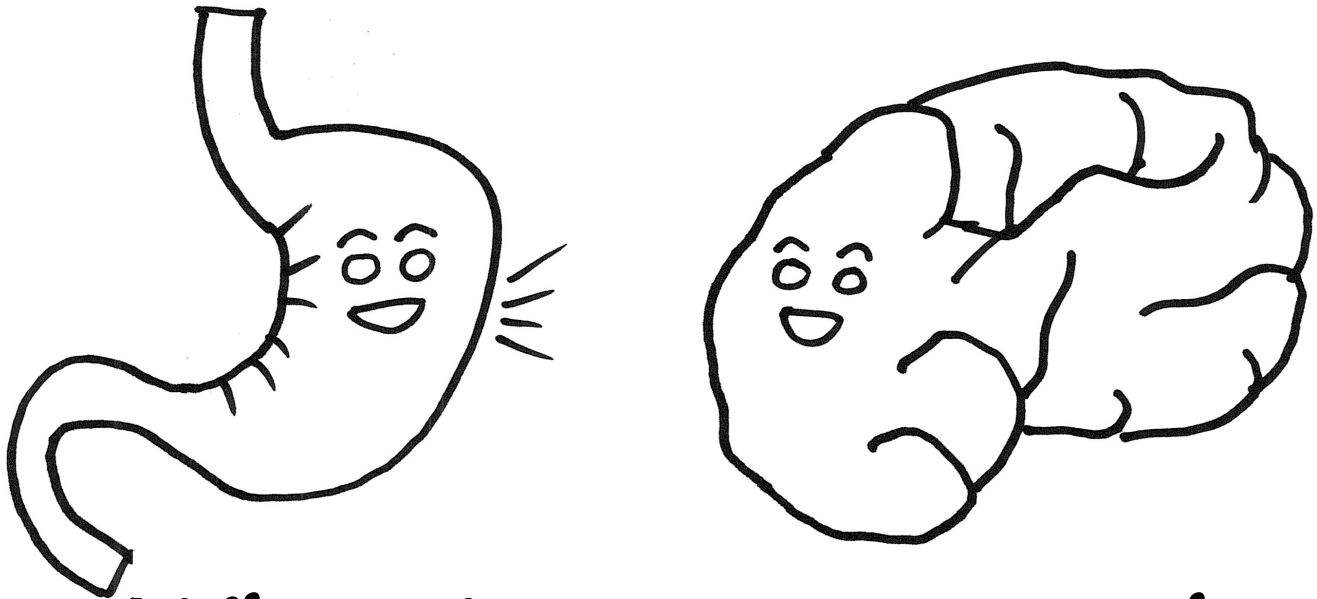


VOLUNTEERS NEEDED



What is your stomach saying to your brain?

Healthy volunteers are needed for a research study on how stomach activity and brain activity are related. Stomach activity is monitored using electrodes placed on the skin of the abdomen; brain activity is monitored using MRI.

Who: Healthy adults, age 18-49.

Where: F.M. Kirby Research Center for Functional Brain Imaging at Kennedy Krieger Institute, 707 N Broadway, Baltimore MD.

When: About one-and-a-half hours on each of two mornings (close together). Before one morning, you will be asked to fast overnight (no food after dinner).

What: You will receive \$50 compensation on conclusion of second scan.

How: Email gutbrain@kennedykrieger.org

Principal investigator: James J. Pekar, Ph.D.

IRB00243929